

Costa

ERA
RESIDENCE
Estepona

De La

A PLACE TO RETURN TO

Content

Location

Map

Concept

Architecture

Interiors

Amenities & Wellness

Landscaping

People Behind the Brand

Floor Plans



LOCATION

**SET ON THE NEW GOLDEN MILE
BETWEEN MARBELLA AND ESTEPONA, ERA
RESIDENCES PLACES YOU AT THE CENTER
OF THE COSTA DEL SOL LIFESTYLE.**

Surrounded by beaches, golf courses,
wellness clubs and established lifestyle
destinations, the project combines privacy
with effortless connectivity to everything
essential for Mediterranean living.
A location designed not around movement —
but around returning.

**ERA
RESIDENCE**



Marbella



Airport Malaga
45 min



 **Playa de Puerto Banus**

 **Puerto Banus**

AP-7

A-7

 **Playa de Guadalmansa**

Airport Gibraltar
50 min



300 m



Estepona



 **Playa de rada**

LAGUNA
BEACH CLUB

Kempinski
HOTELS & RESORTS

C O S T A

Location Map

D E L S O L

CONCEPT

A PLACE TO RETURN TO



ERA RESIDENCES IS A BOUTIQUE GATED COMMUNITY OF ONLY 25 RESIDENCES, DESIGNED AROUND PRIVACY, WELLBEING AND TIMELESS MEDITERRANEAN LIVING.

Inspired by the atmosphere of Marbella's golden era, the project combines contemporary architecture with warm materials, natural landscaping and carefully curated spaces.



BY:
Schiemann Weyers Architects
OCWA Architects

ARCHITECTURE

Residences



THE ARCHITECTURE OF ERA RESIDENCES
BALANCES CLEAN CONTEMPORARY LINES WITH
MEDITERRANEAN WARMTH AND TEXTURE.

The residences embrace the perimeter of the plot, creating a private internal courtyard dedicated to wellness and leisure.

Terraces, rooftop solariums and expansive openings maximize natural light while creating a seamless indoor-outdoor lifestyle.

Natural stone façades were selected for their timeless appearance, durability and ease of maintenance, allowing the architecture to age beautifully over time.



INTERIORS

RESIDENCES RANGE FROM 104 TO 244 SQ.M., OFFERING SPACIOUS SINGLE-LEVEL AND DUPLEX LAYOUTS WITH GENEROUS TERRACES AND ROOFTOP SOLARIUMS.

FEATURES INCLUDE:

Underfloor heating throughout the property

Climate automation systems

Smart lock access systems

Electrically adjustable aluminium shutters

Schneider Electric DLIFE switches and mechanisms

COSTA

DEL SOL

Kitchen specifications include:
Siemens appliances



Kitchen



**BATHROOMS FEATURE
GROHE FITTINGS**

Optional upgrades are available:

- Private jacuzzi
- EV charging point installation
- Photovoltaic panels

**EVERY DETAIL WAS SELECTED
TO CREATE HOMES THAT FEEL ELEGANT,
INTUITIVE AND EFFORTLESS TO LIVE IN.**





AMENITIES & A PLACE TO RETURN TO WELLNESS



DESIGNED EXCLUSIVELY FOR RESIDENTS AND THEIR GUESTS, THE AMENITIES AT ERA ENCOURAGE A SLOWER AND MORE BALANCED MEDITERRANEAN LIFESTYLE.

Residents have access to:

- Saltwater swimming pool
- Children's pool
- Private spa with sauna, jacuzzi and wellness shower
- 60 sq.m. fitness centre
- Underground parking
- Private storage rooms
- Key-card access and integrated security systems

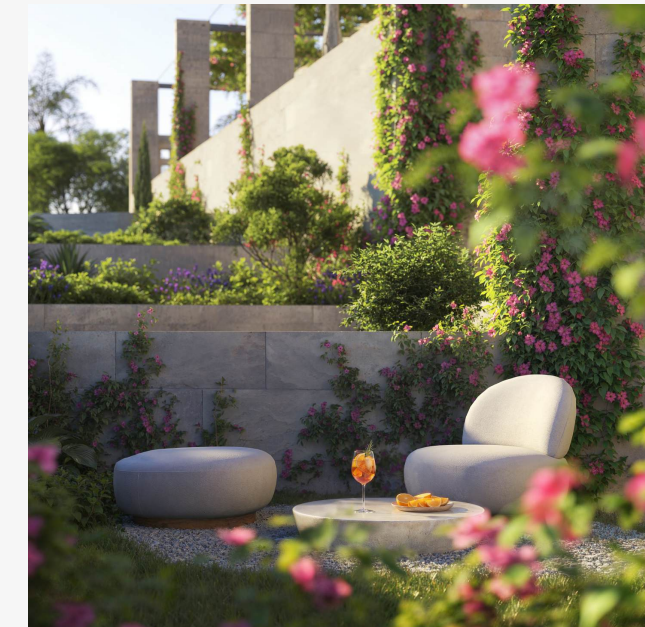
EACH PARKING SPACE INCLUDES PRE-INSTALLATION FOR OPTIONAL EV CHARGING.



LANDSCAPING

C O S T A

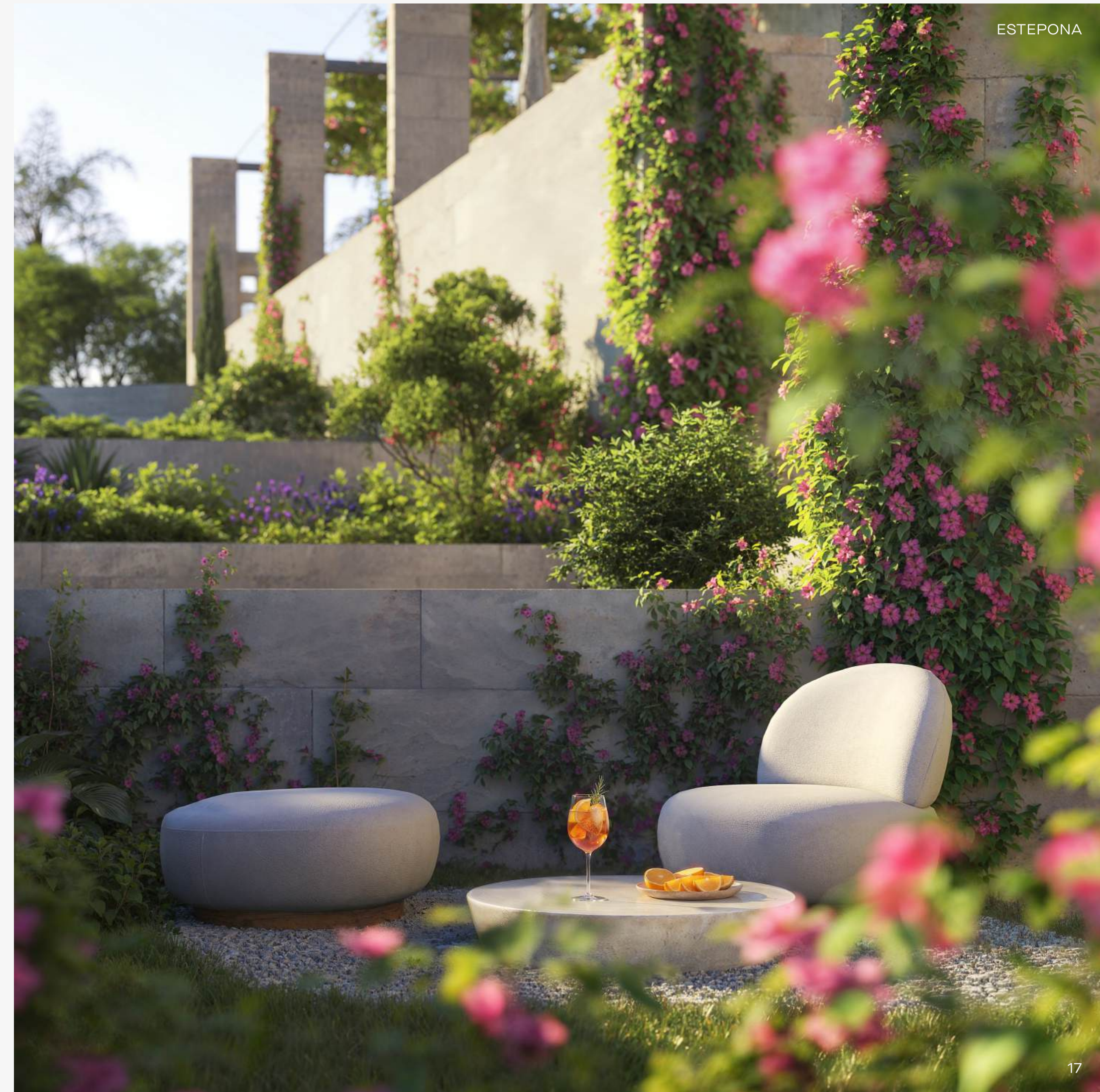
D E L S O L



THE LANDSCAPING CONCEPT WAS DESIGNED TO SOFTEN THE ARCHITECTURE AND STRENGTHEN THE CONNECTION BETWEEN THE RESIDENCES AND THE MEDITERRANEAN ENVIRONMENT.

Native low-maintenance species are combined with climbing greenery integrated into private planters, while carefully positioned trees create natural shade and privacy throughout selected areas of the community.

The result is a landscape that feels calm, architectural and naturally integrated into everyday living.



PEOPLE BEHIND *The* BRAND

ERA RESIDENCES IS THE RESULT OF A COLLABORATION BETWEEN ARCHITECTS, DEVELOPERS, BUILDERS AND CREATIVE TEAMS UNITED BY A SHARED VISION OF TIMELESS MEDITERRANEAN LIVING.

DEVELOPER

Swiss Technology S.L.

SALES & MARKETING

UNREAL ESTATE

ARCHITECTS

Schiemann Weyers Architects
OCWA Architects

CONSTRUCTION COMPANY

ALQUIMIA

Every aspect of the project — from architecture and landscaping to interiors and branding — was developed with attention to detail, quality and long-term value.

A project shaped not only by design expertise, but by a deep understanding of how people want to live on the Costa del Sol today.

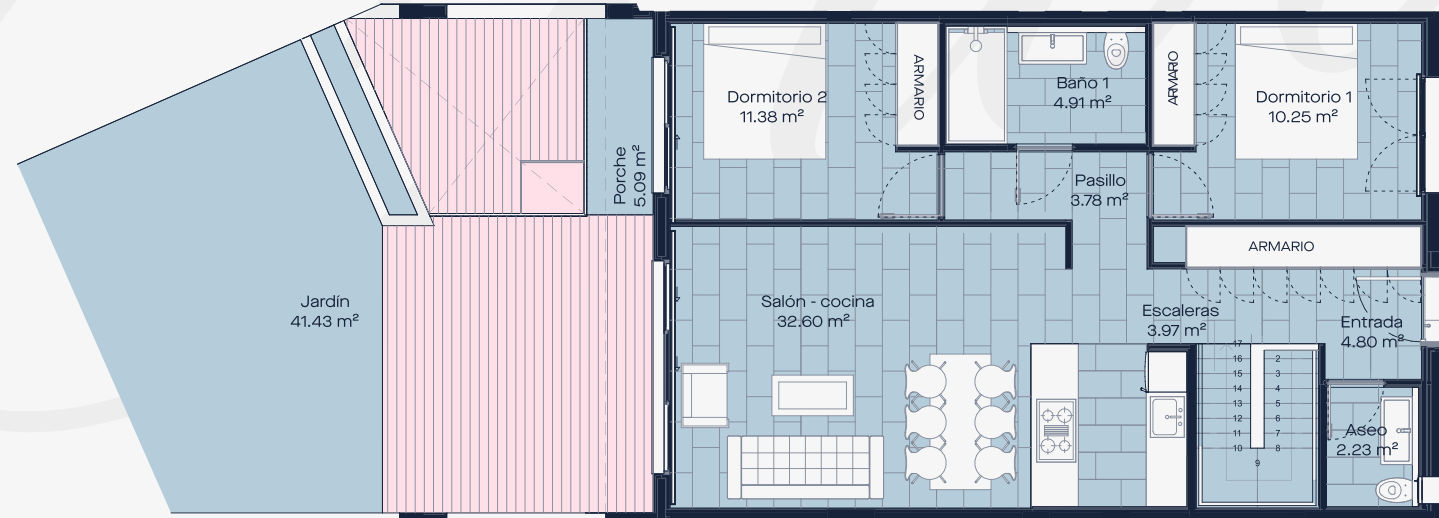


FLOOR *Plans*

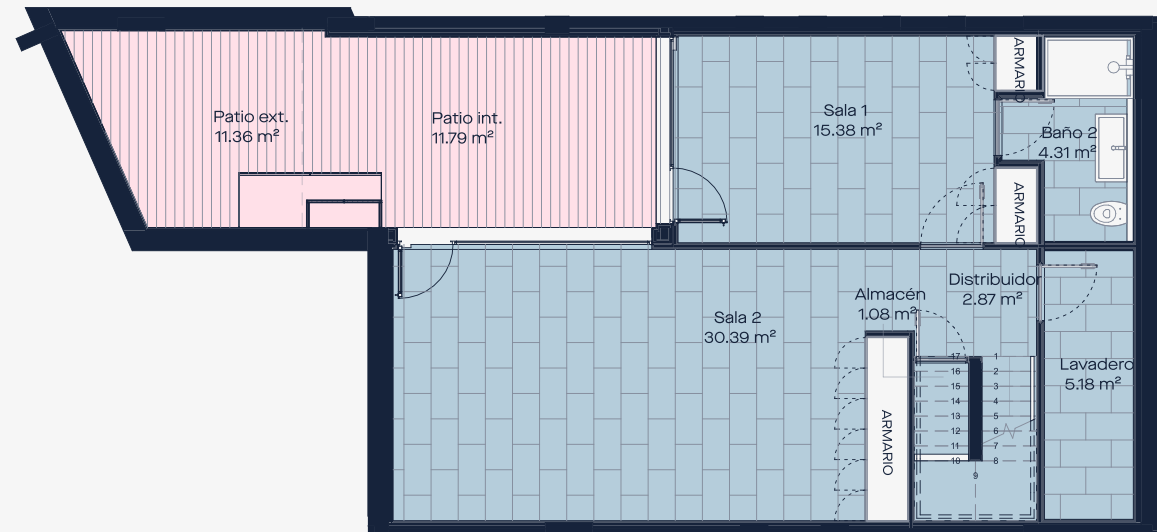
C O S T A

D E L S O L

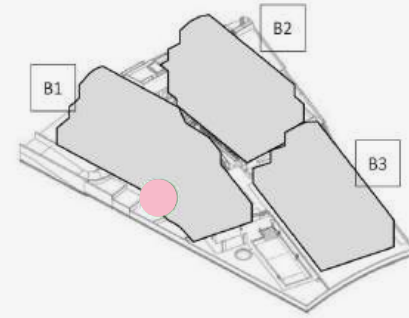
011



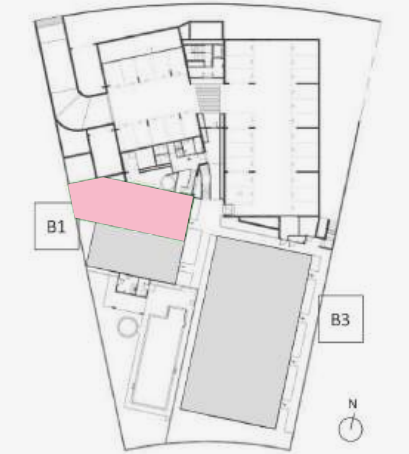
Planta Baja / GROUND FLOOR



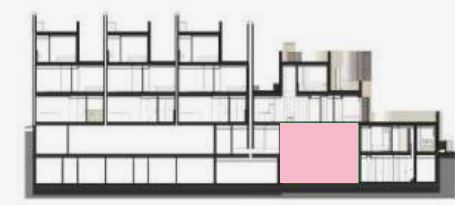
Planta Sótano / BASEMENT FLOOR



Axonometría



Planta Sótano 1

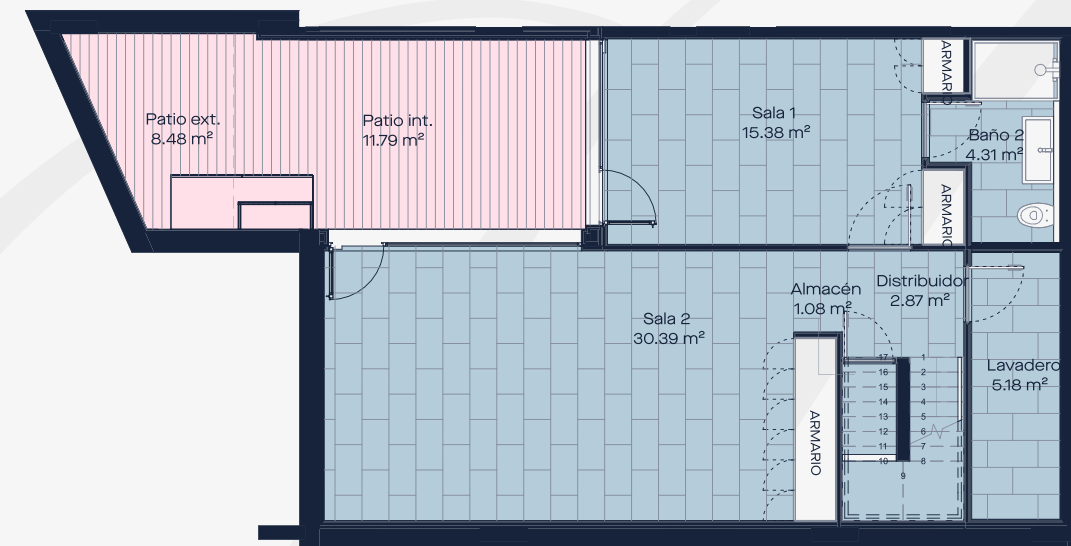


Sección Bloque 1

012



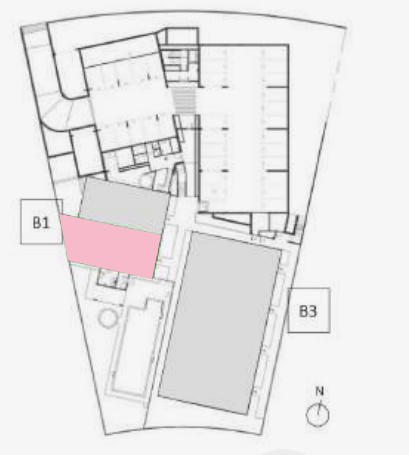
Planta Baja / GROUND FLOOR



Planta Sótano / BASEMENT FLOOR



Axonometría

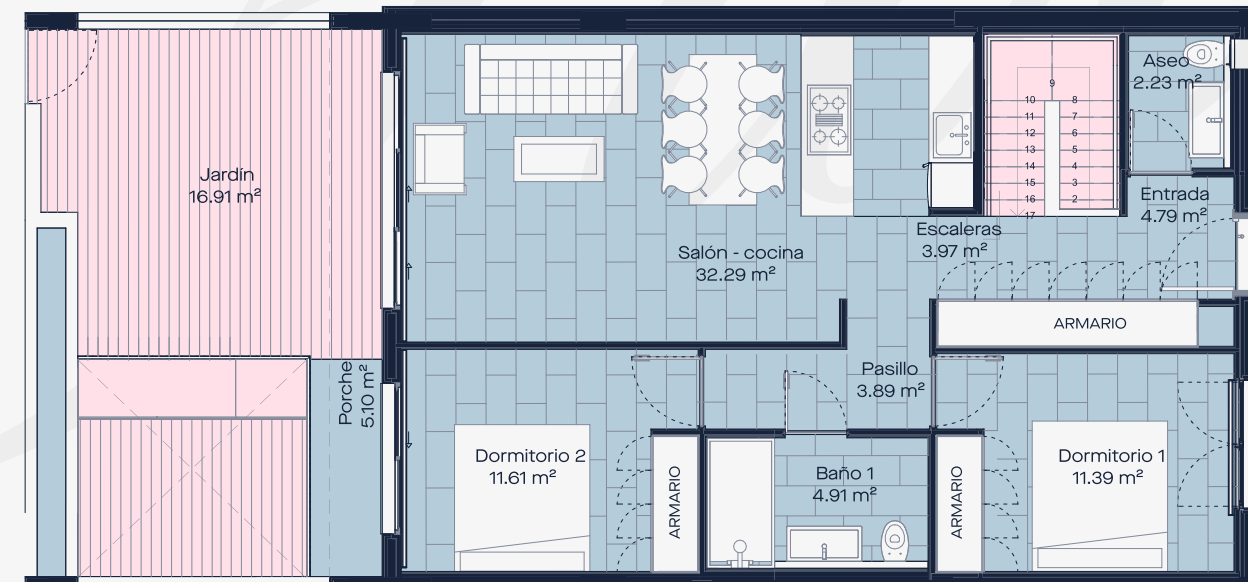


Planta Sótano 1

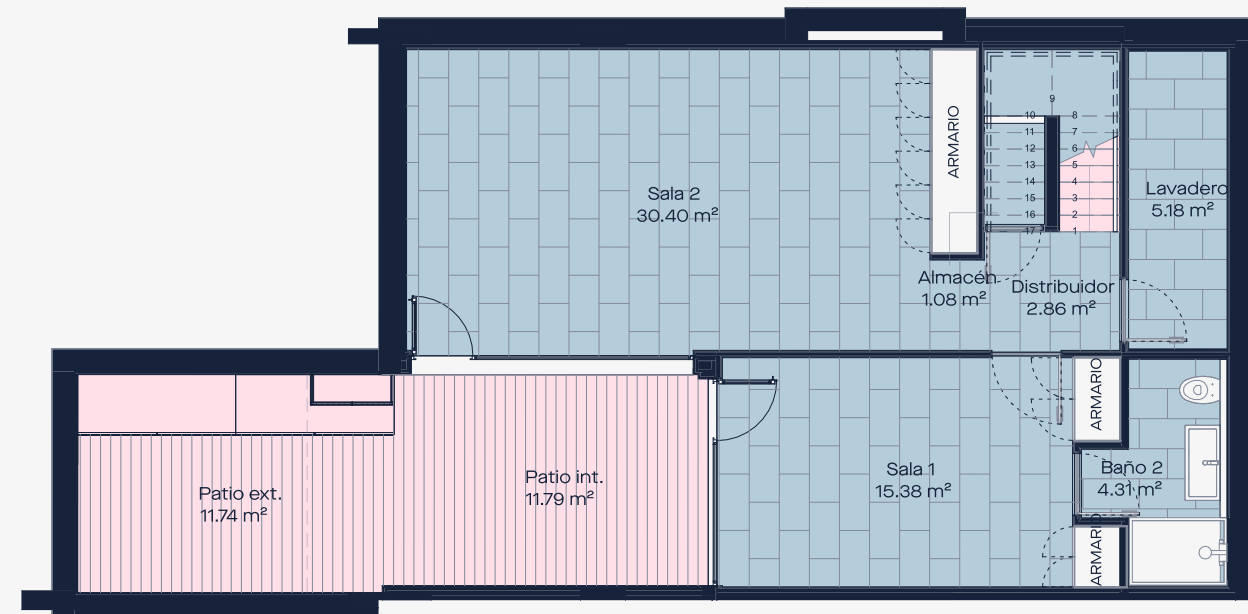


Sección Bloque 1

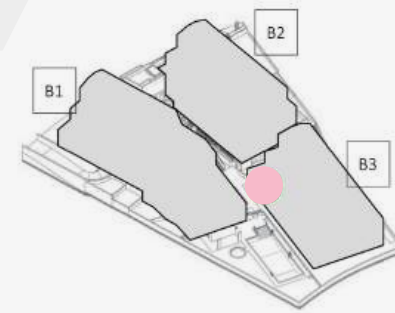
031



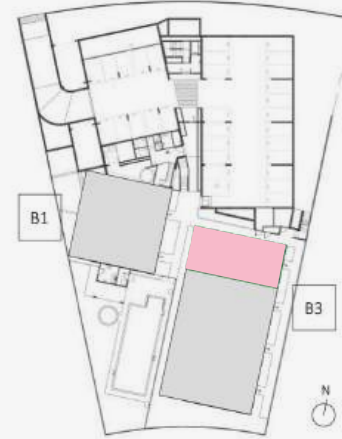
Planta Baja / GROUND FLOOR



Planta Sótano / BASEMENT FLOOR



Axonometría

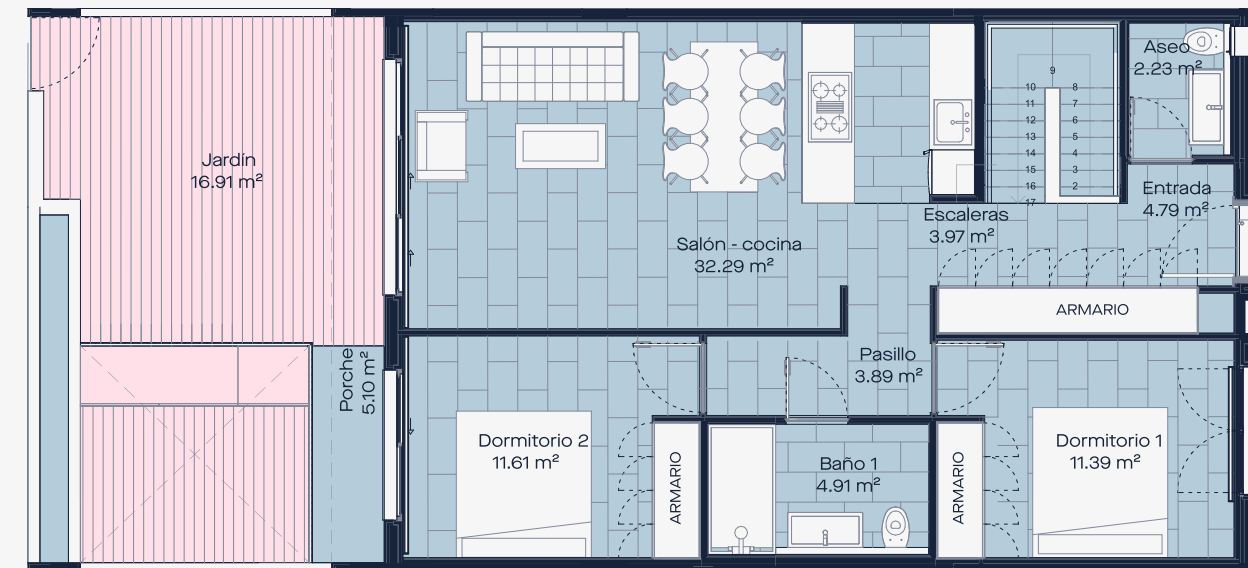


Planta Sótano 1

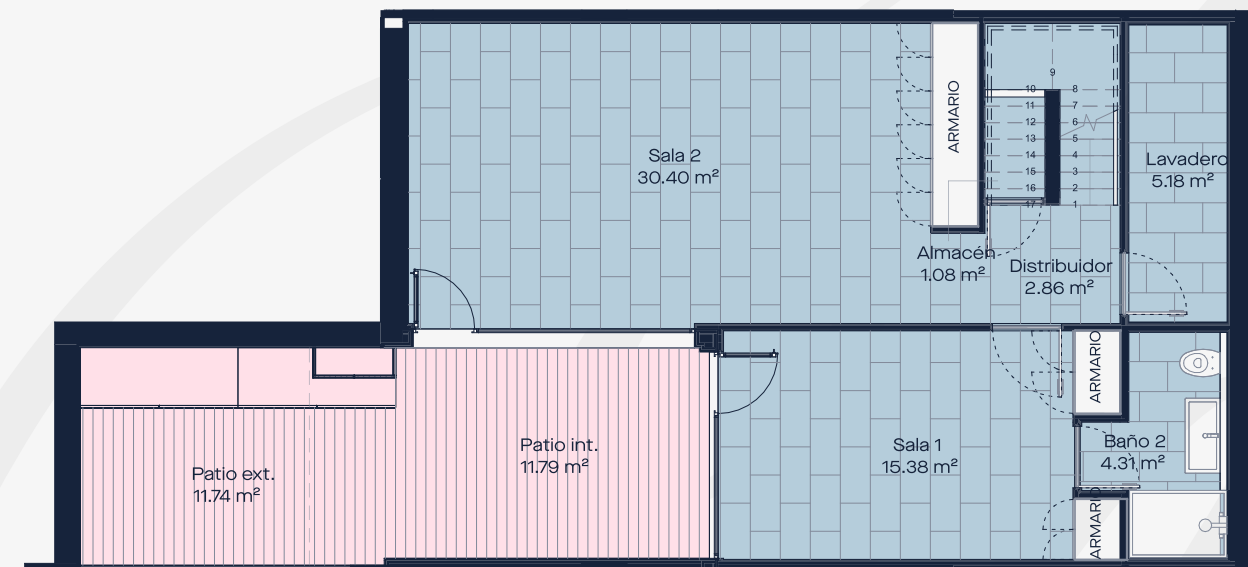


Sección Bloque 3

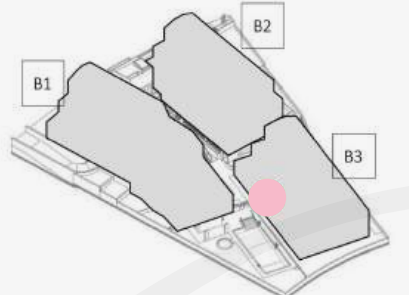
032



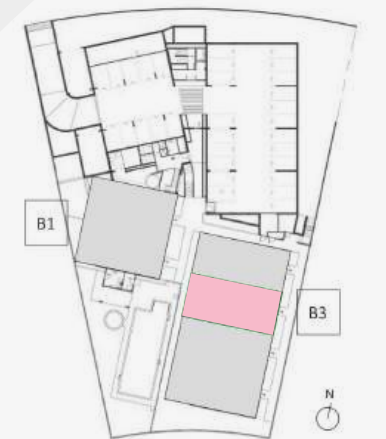
Planta Baja / GROUND FLOOR



Planta Sótano / BASEMENT FLOOR



Axonometría

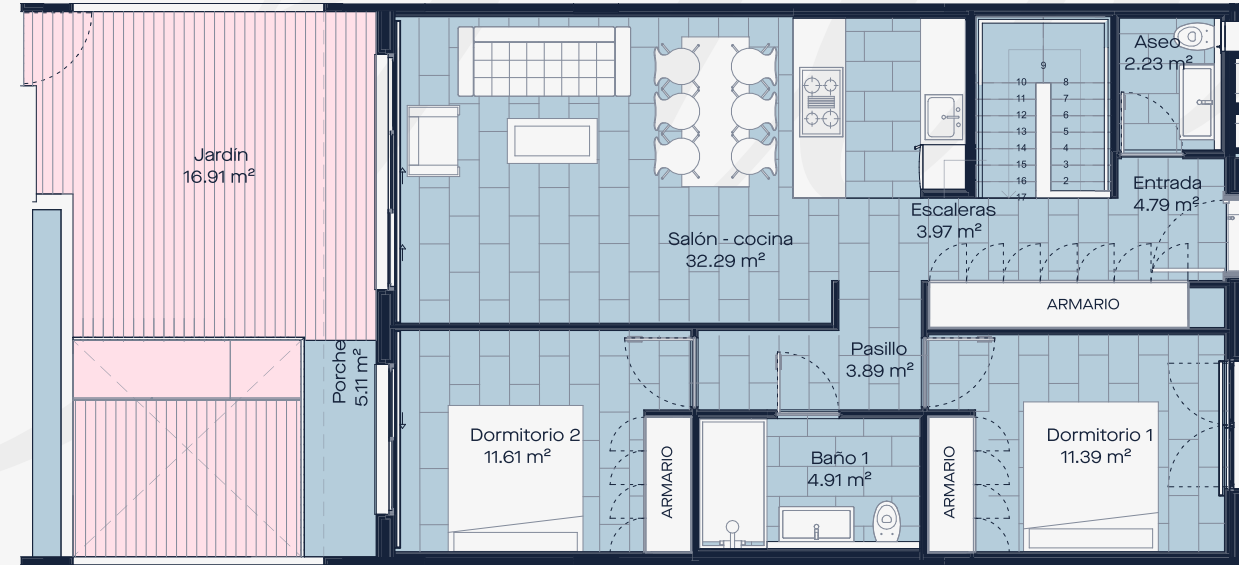


Planta Sótano 1

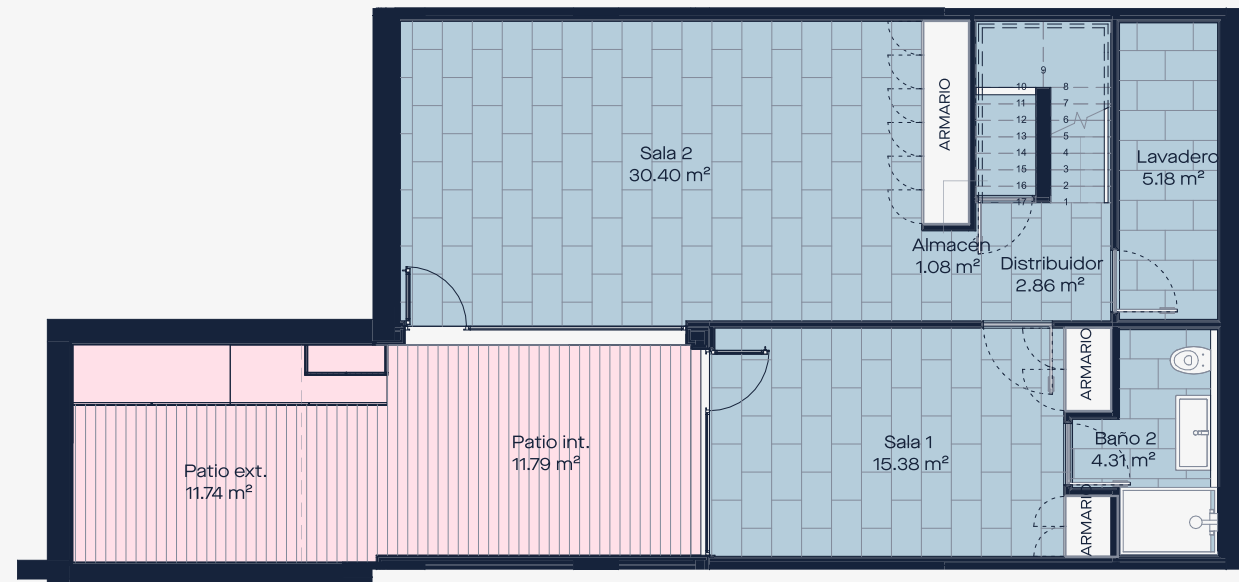


Sección Bloque 3

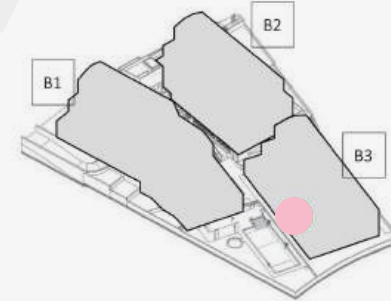
033



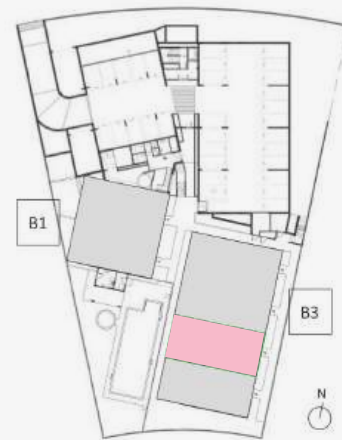
Planta Baja / GROUND FLOOR



Planta Sótano / BASEMENT FLOOR



Axonometría

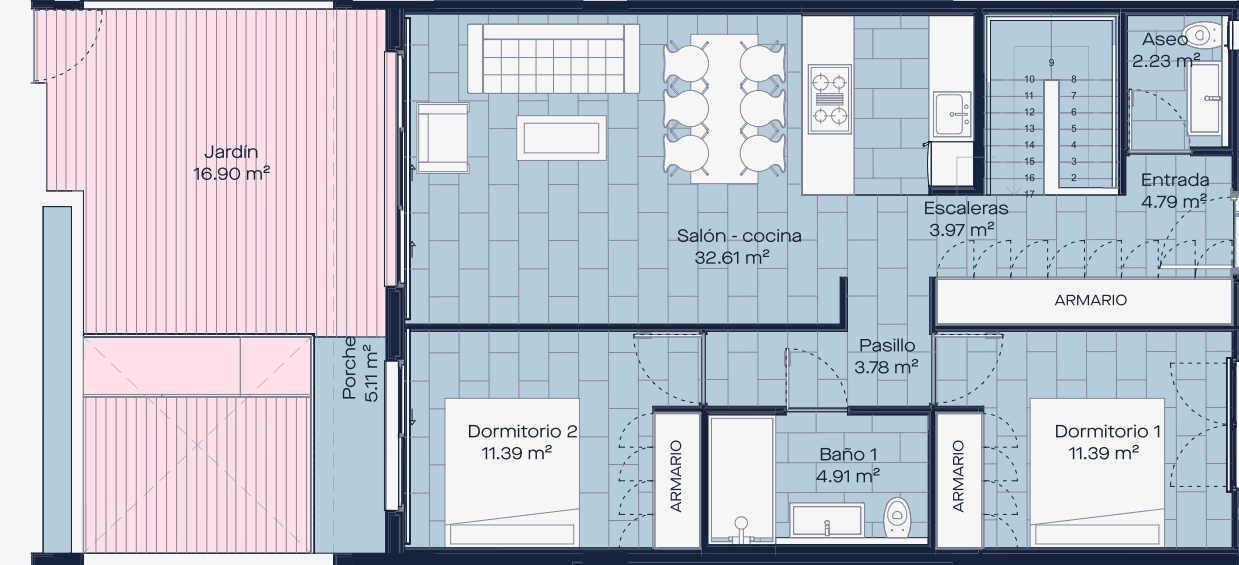


Planta Sótano 1

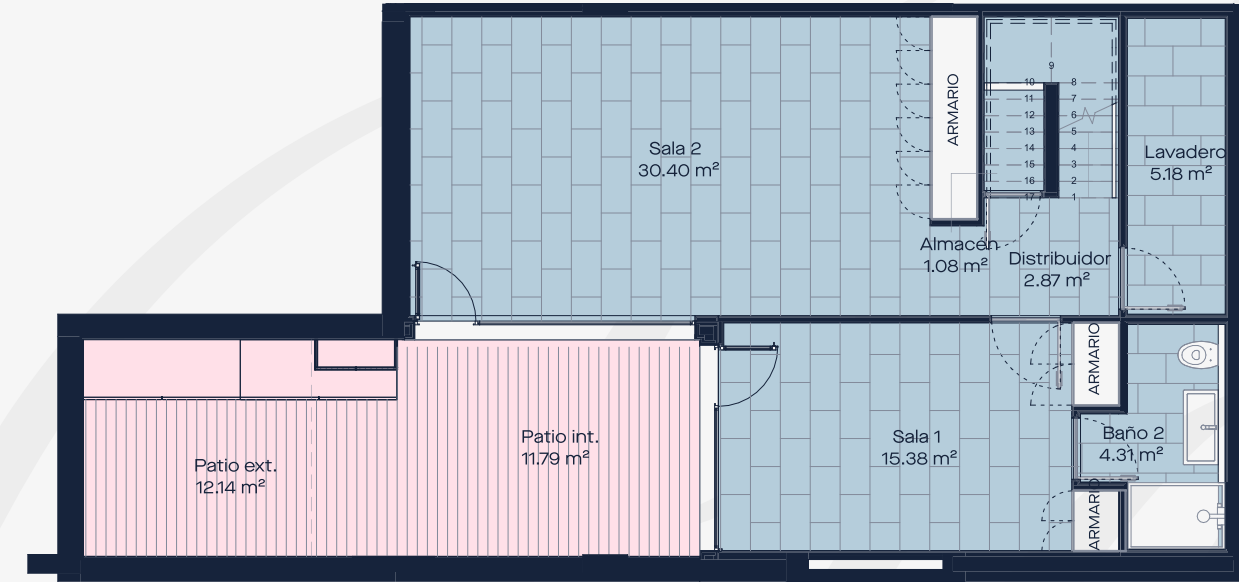


Sección Bloque 3

034



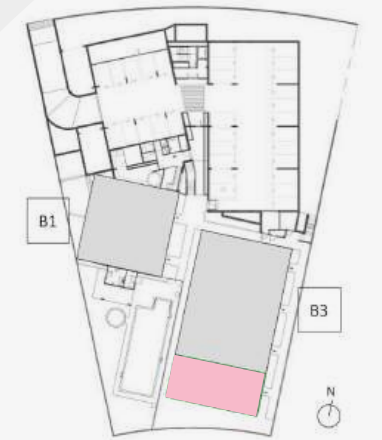
Planta Baja / GROUND FLOOR



Planta Sótano / BASEMENT FLOOR



Axonometría



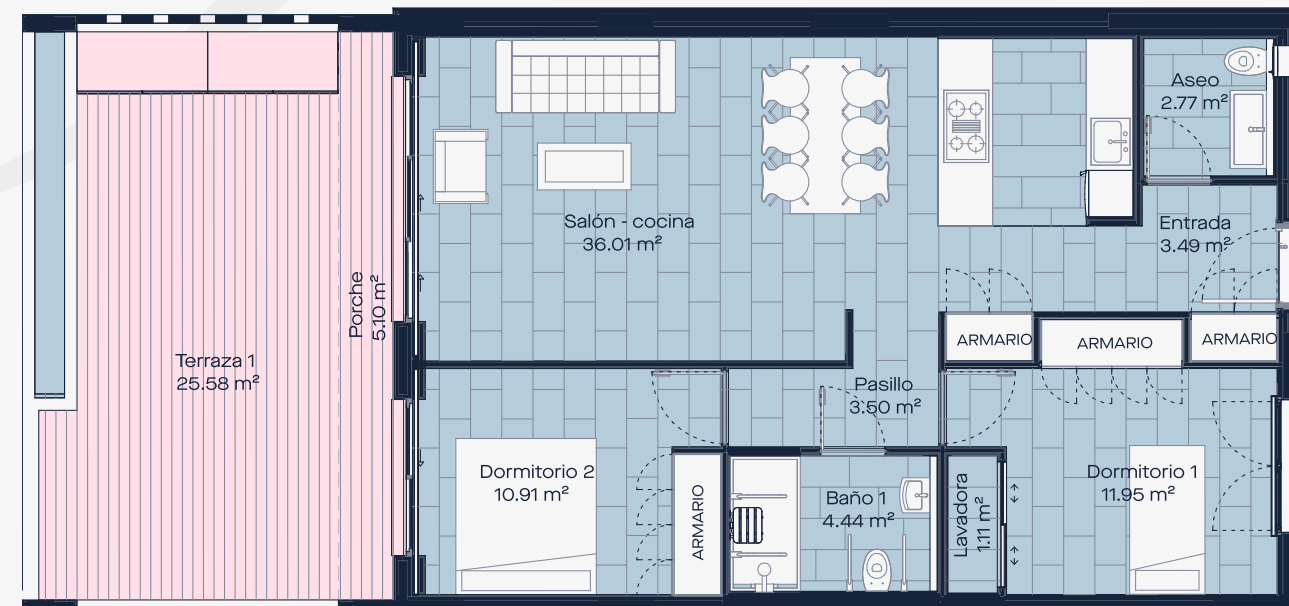
Planta Sótano 1



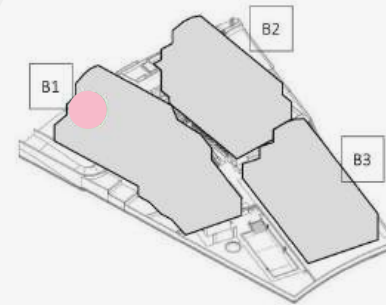
Sección Bloque 3

111

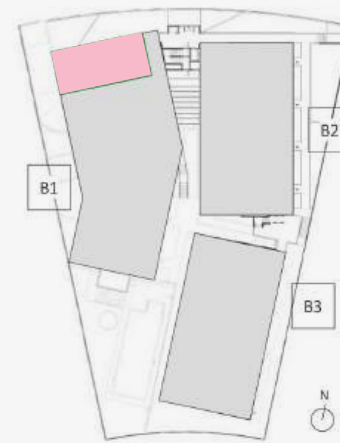
112



Planta Baja / GROUND FLOOR



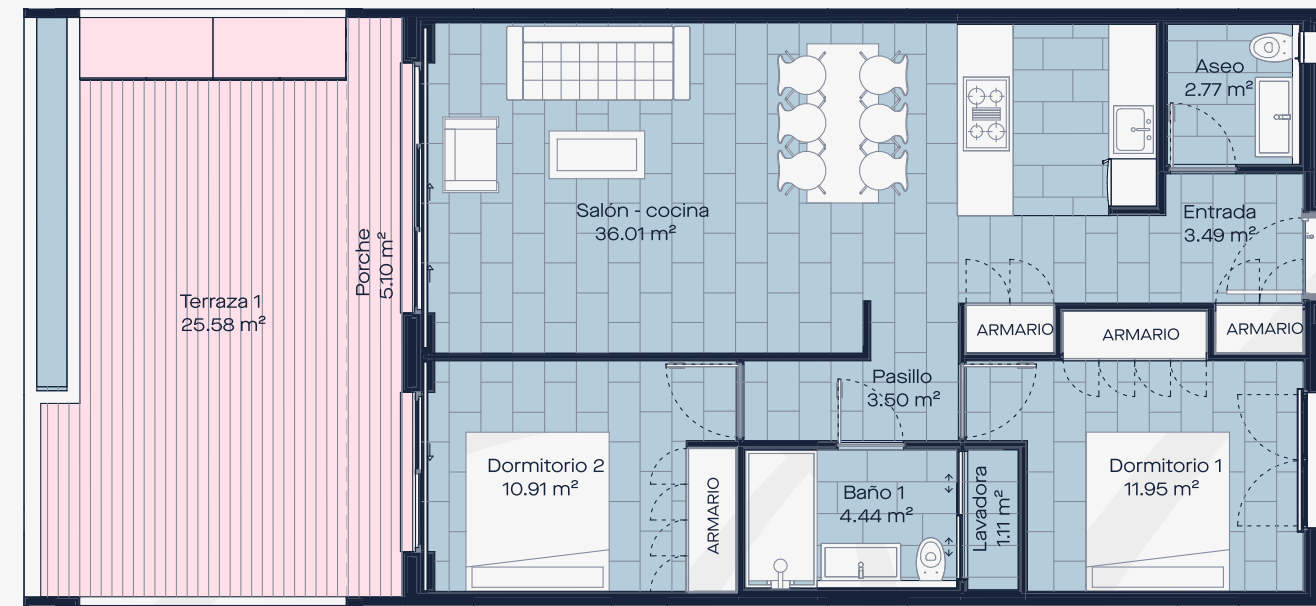
Axonometría



Planta Baja



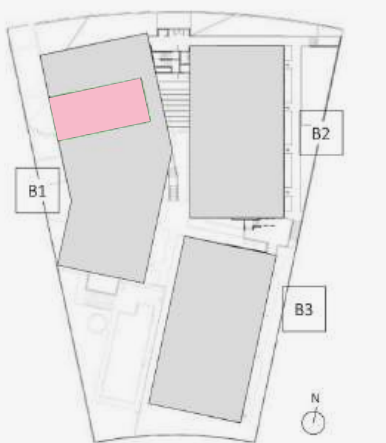
Sección Bloque 1



Planta Baja / GROUND FLOOR



Axonometría



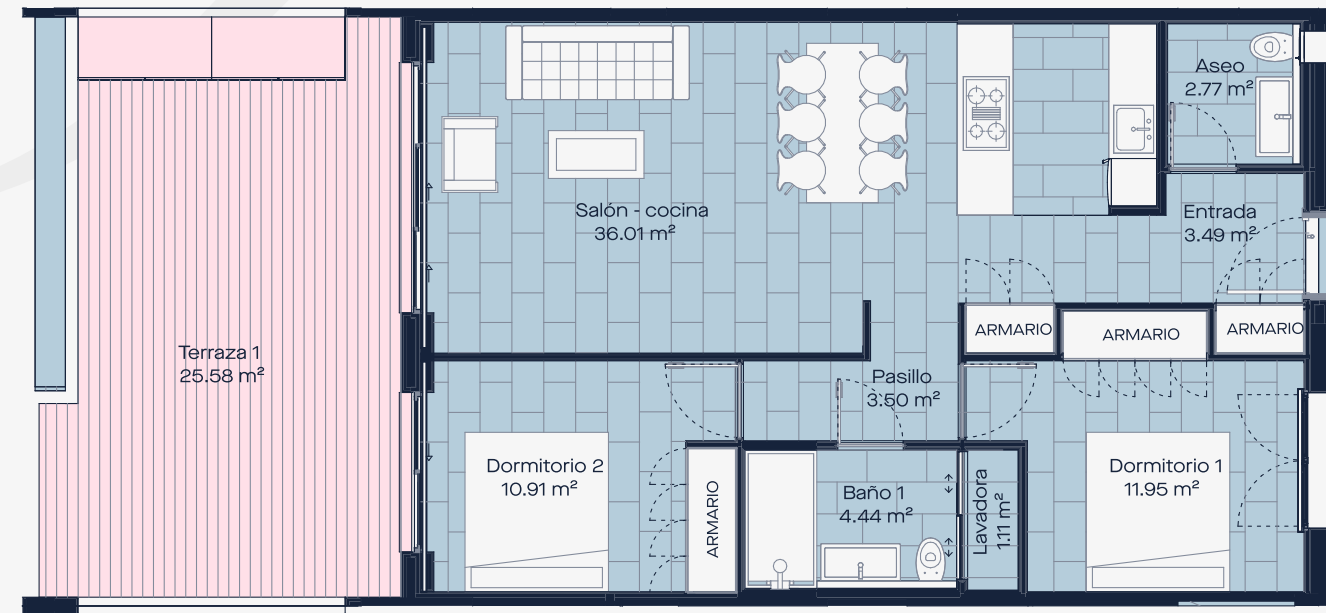
Planta Baja



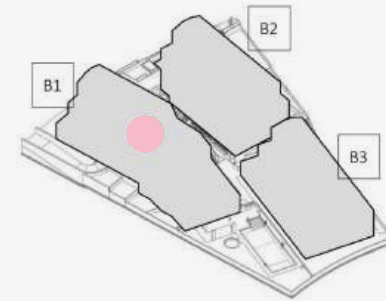
Sección Bloque 1

113

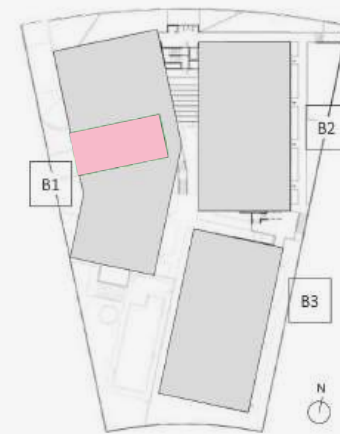
121



Planta Baja / GROUND FLOOR



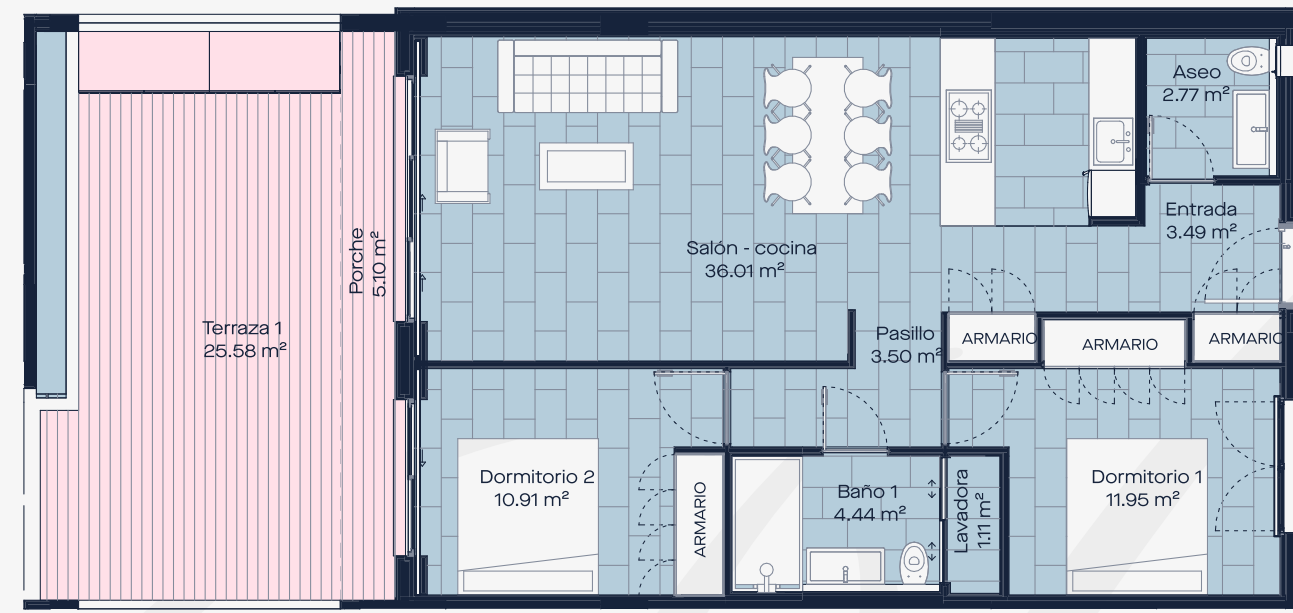
Axonometría



Planta Baja



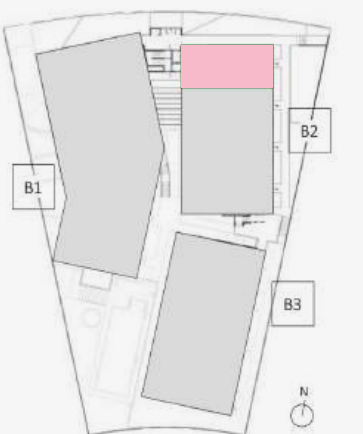
Sección Bloque 1



Planta Baja / GROUND FLOOR



Axonometría



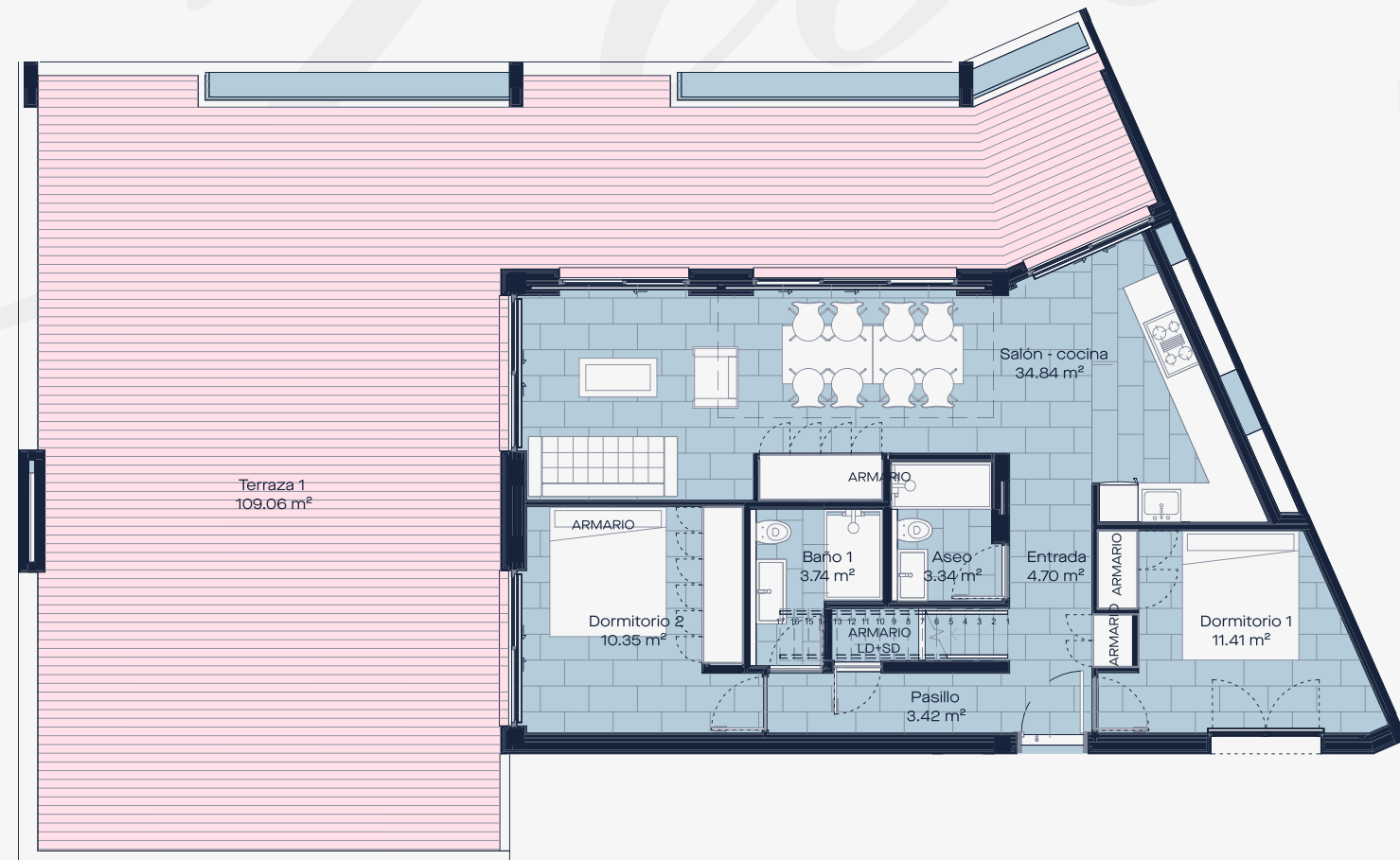
Planta Baja



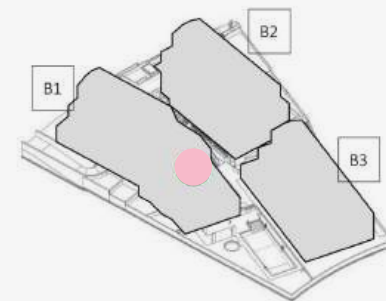
Sección Bloque 2

114

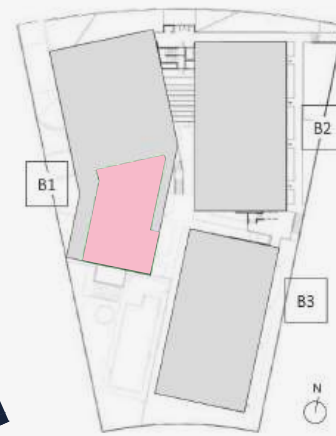
114



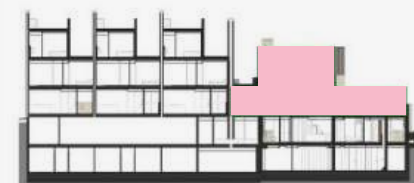
Planta Baja / GROUND FLOOR



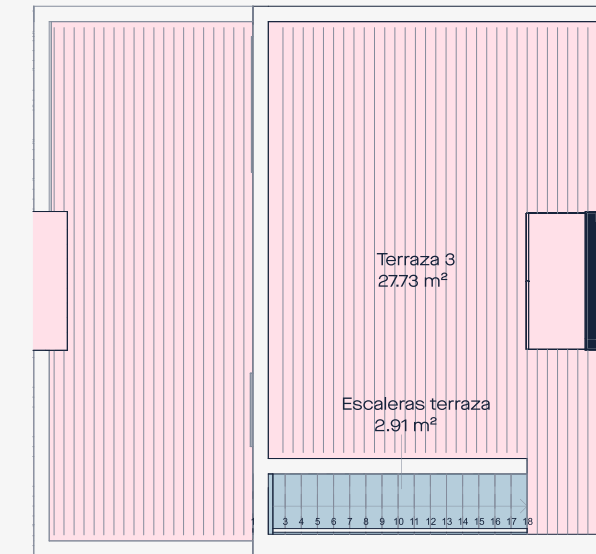
Axonometría



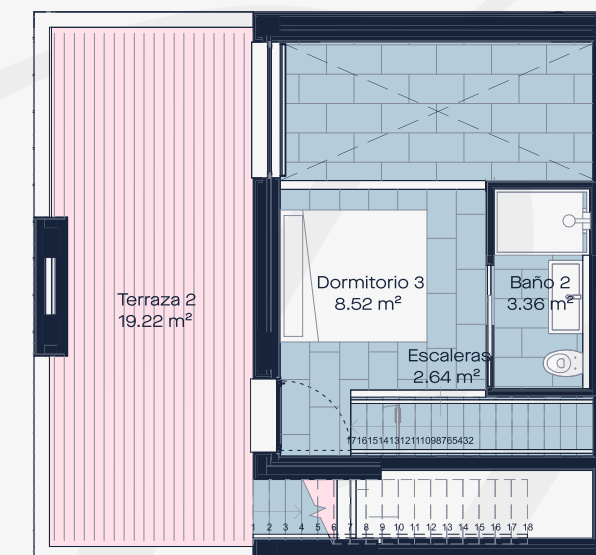
Planta Baja



Sección Bloque 1



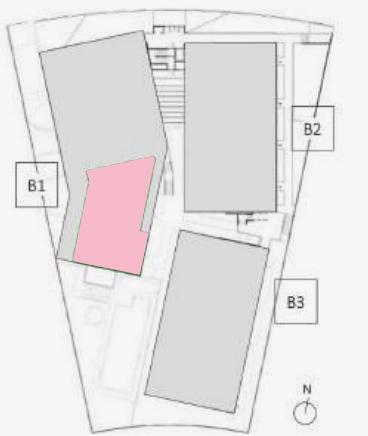
Planta Segunda / SECOND FLOOR



Planta Primera / FIRST FLOOR



Axonometría



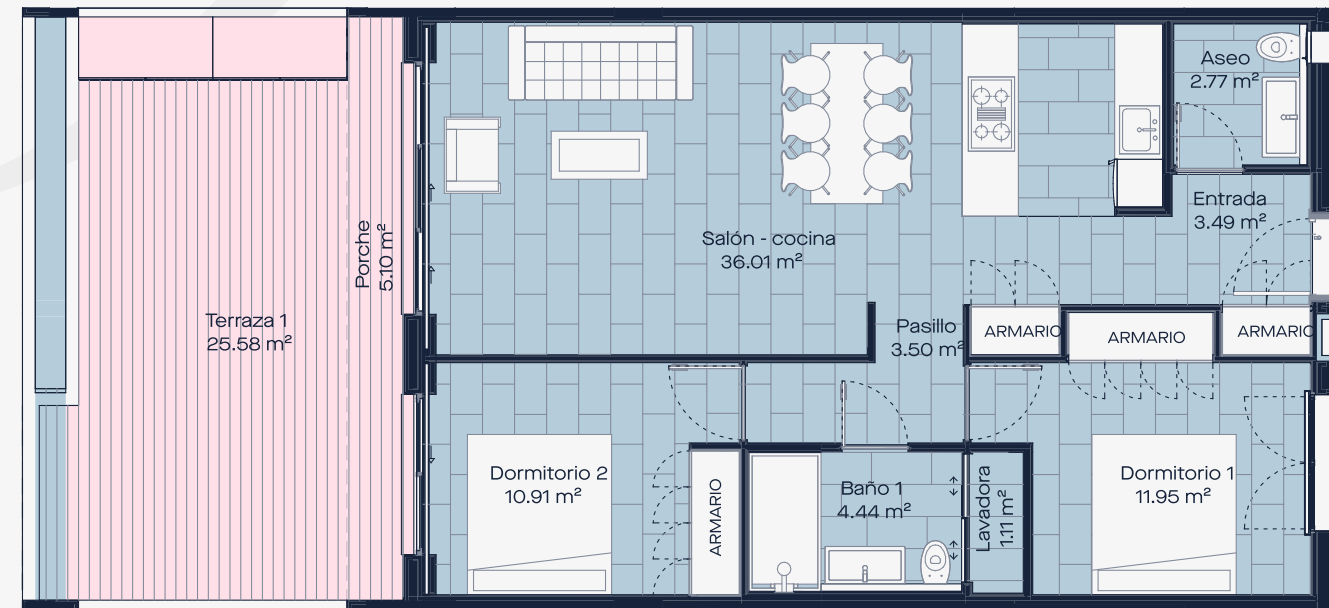
Planta Baja



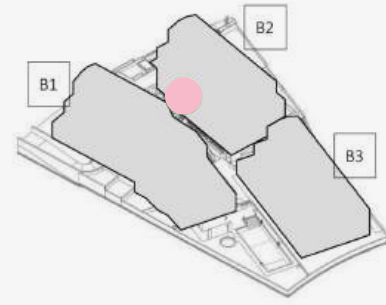
Sección Bloque 1

122

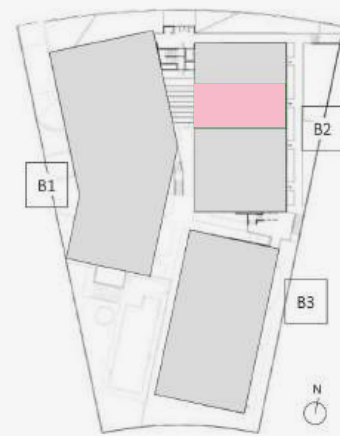
123



Planta Baja / GROUND FLOOR



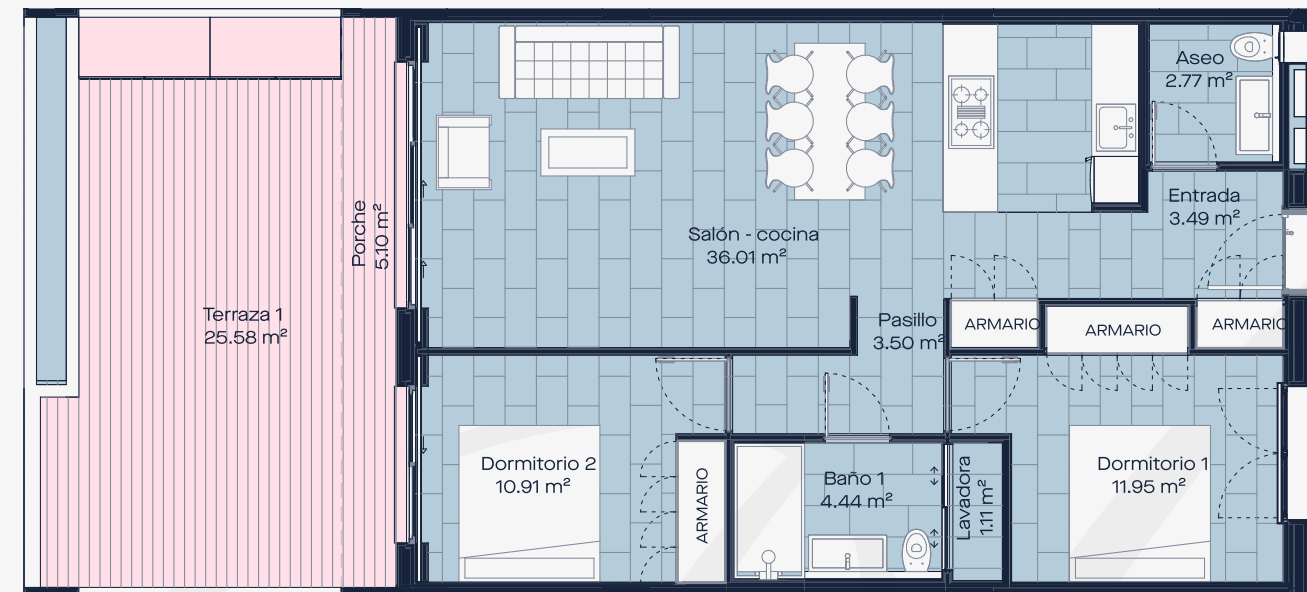
Axonometría



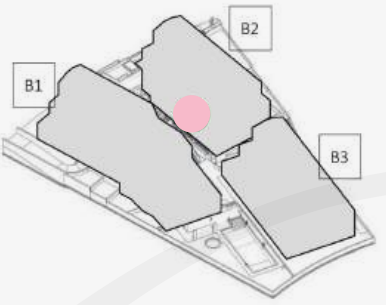
Planta Baja



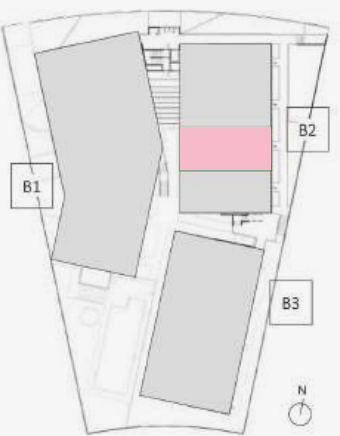
Sección Bloque 2



Planta Baja / GROUND FLOOR



Axonometría

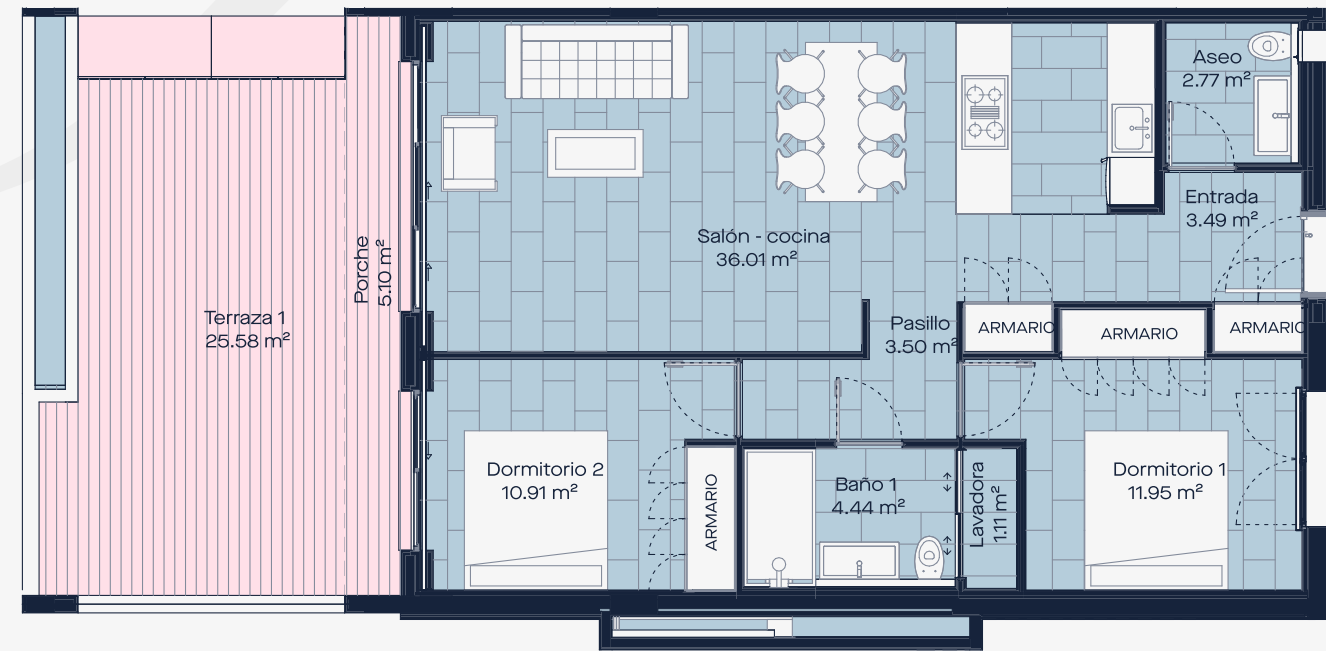


Planta Baja

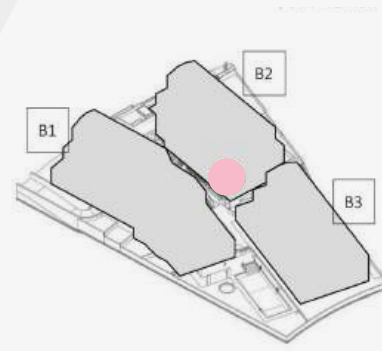


Sección Bloque 2

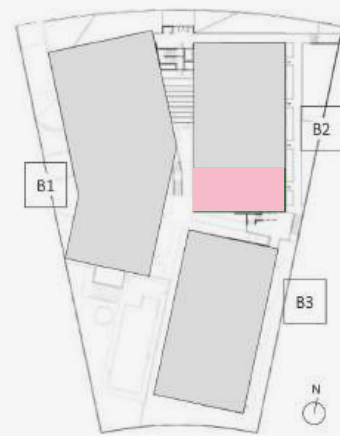
124



Planta Baja / GROUND FLOOR



Axonometría

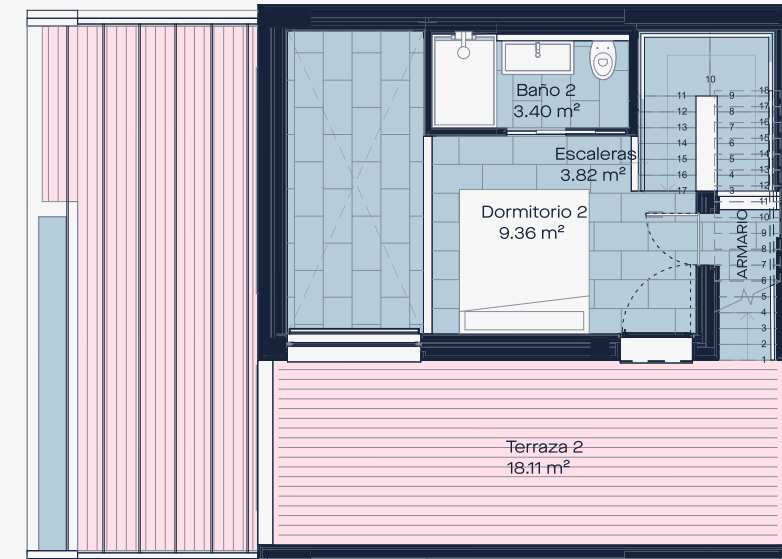


Planta Baja

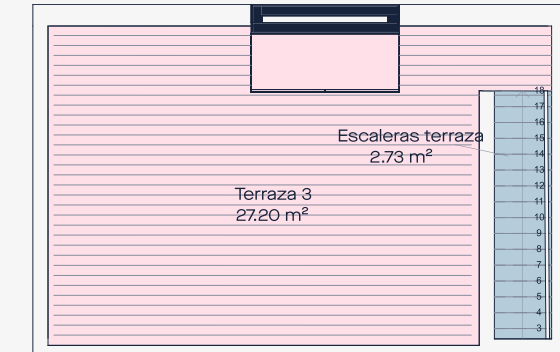


Sección Bloque 2

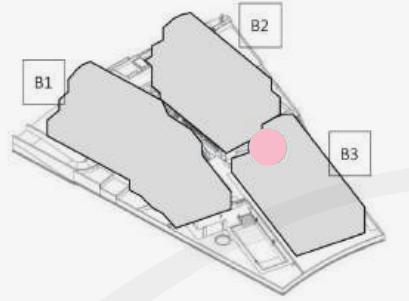
131



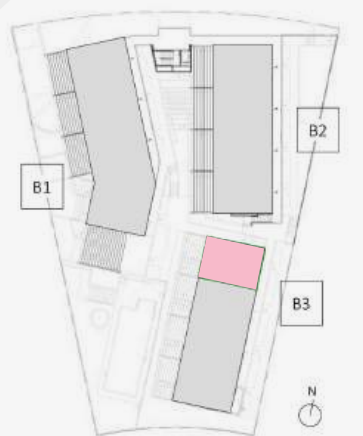
Planta Primera / FIRST FLOOR



Planta Segunda / SECOND FLOOR



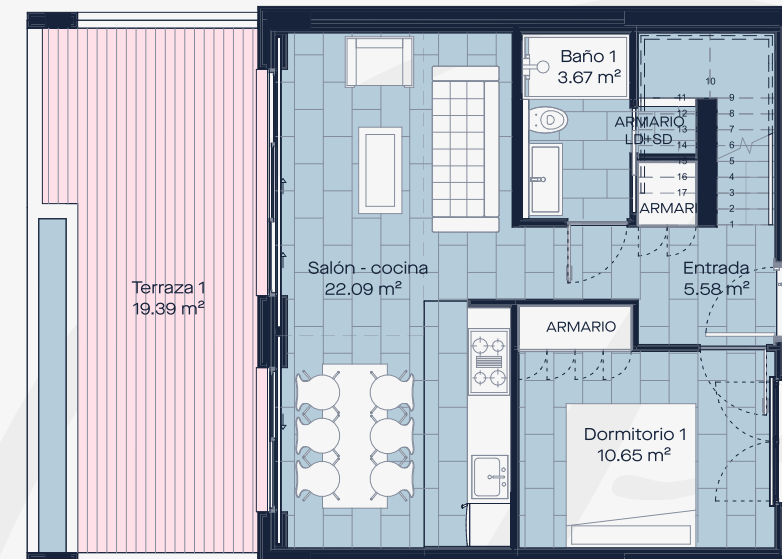
Axonometría



Planta Primera

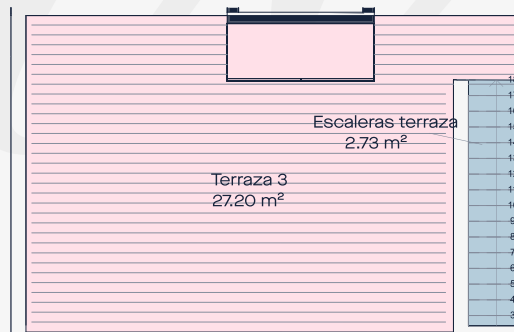
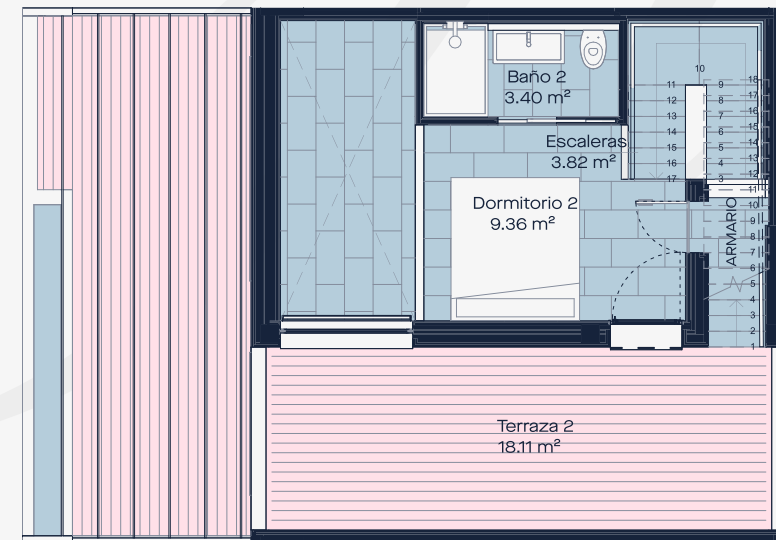


Sección Bloque 3

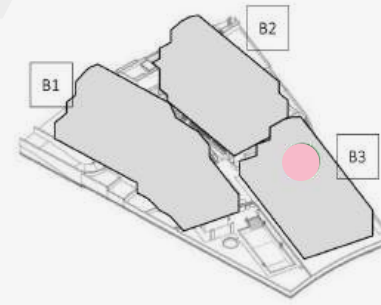


Planta Baja / GROUND FLOOR

132

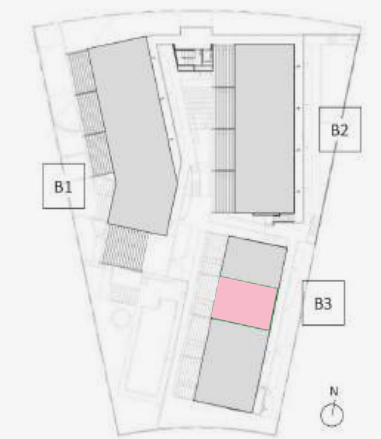
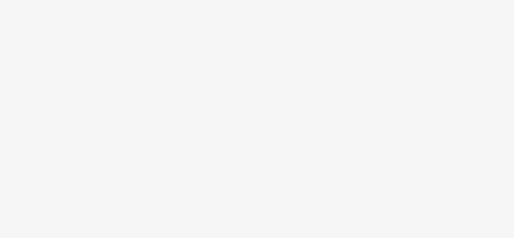
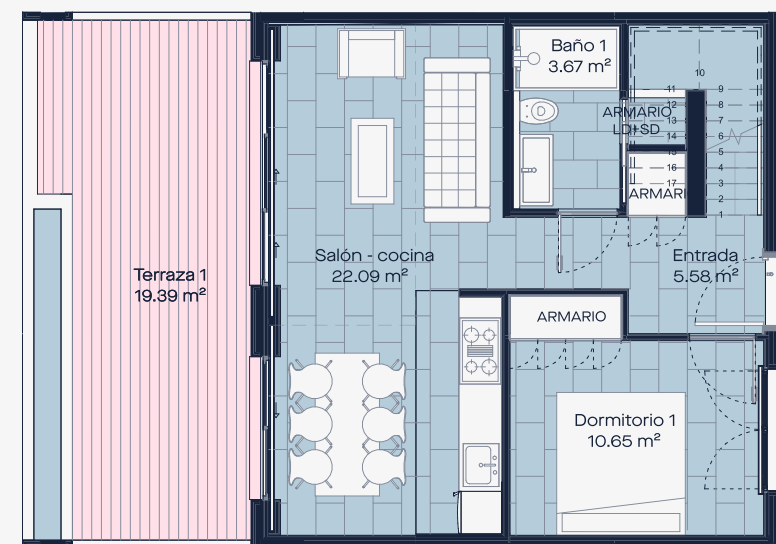


Planta Segunda / SECOND FLOOR



Axonometría

Planta Primera / FIRST FLOOR



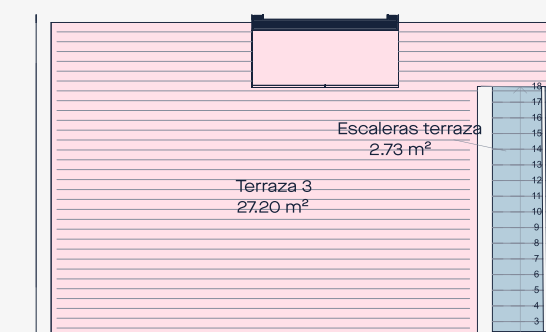
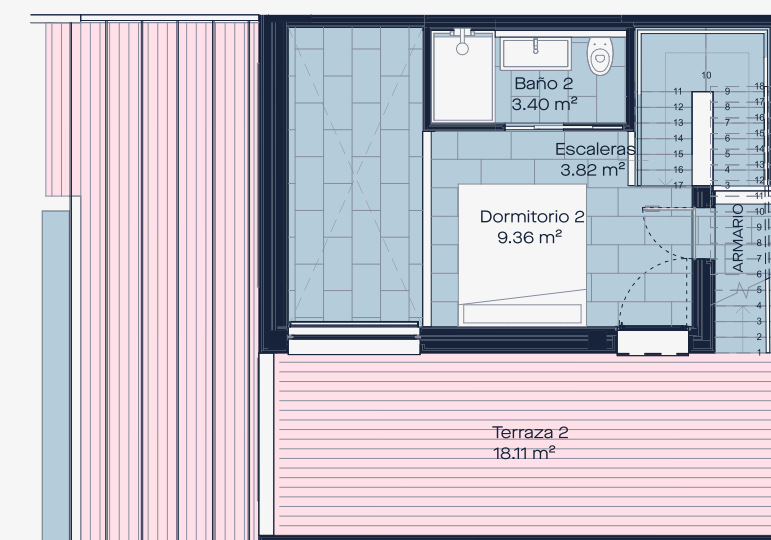
Planta Primera

Planta Baja / GROUND FLOOR

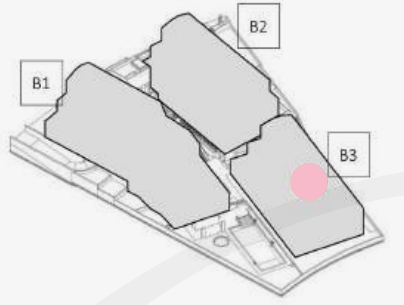


Sección Bloque 3

133

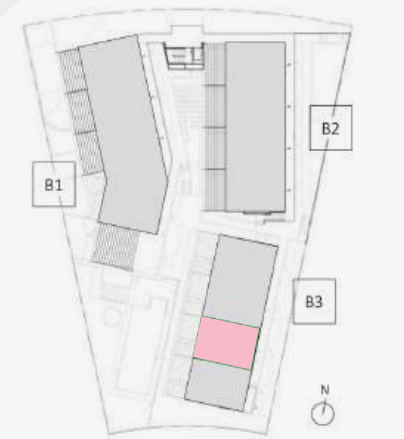
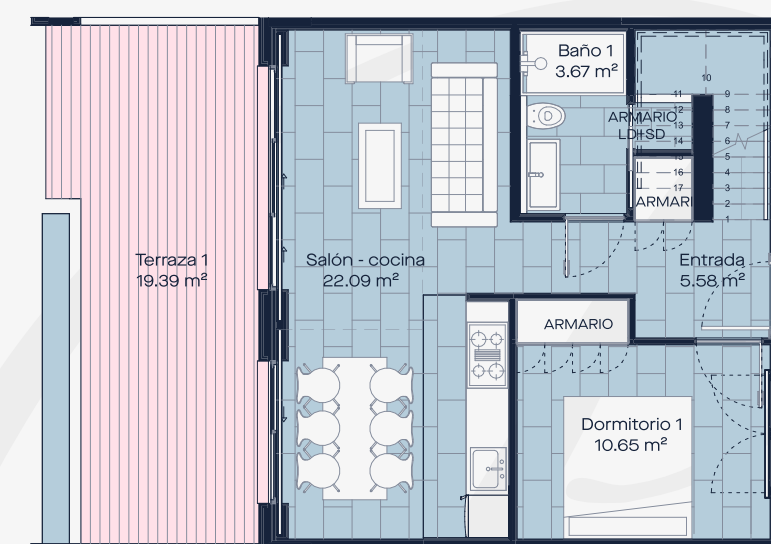


Planta Segunda / SECOND FLOOR



Axonometría

Planta Primera / FIRST FLOOR



Planta Primera

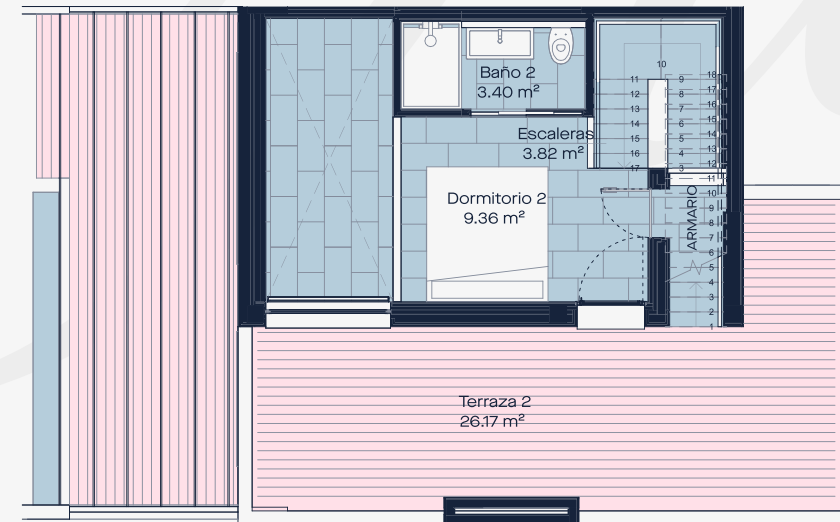
Planta Baja / GROUND FLOOR



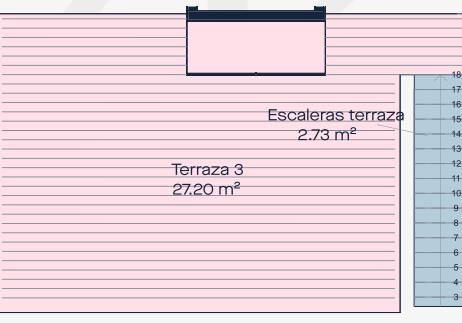
Sección Bloque 3

134

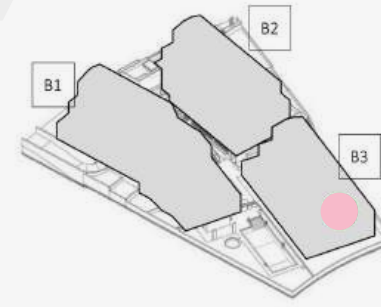
211



Planta Primera / FIRST FLOOR



Planta Segunda / SECOND FLOOR



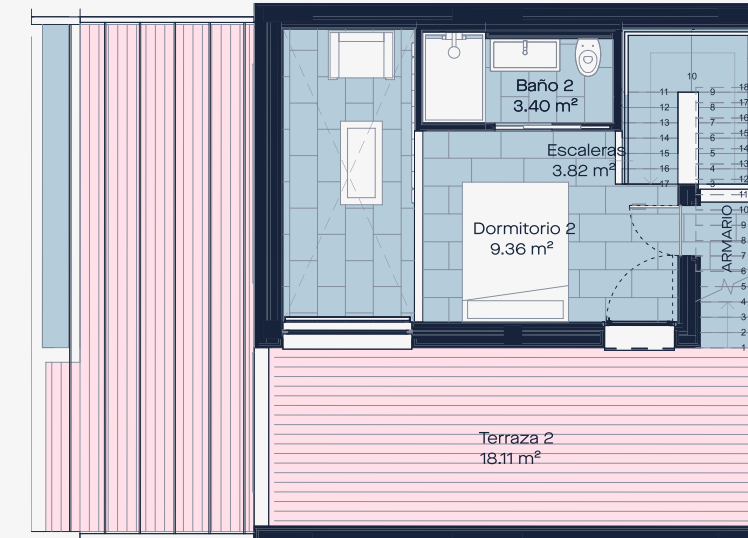
Axonometría



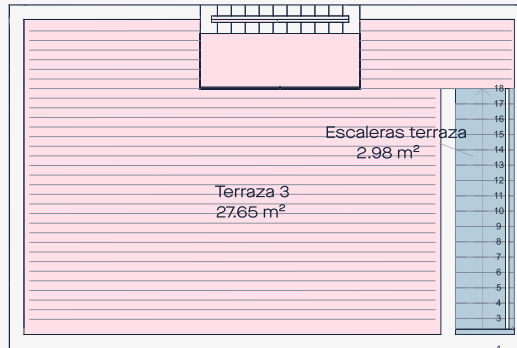
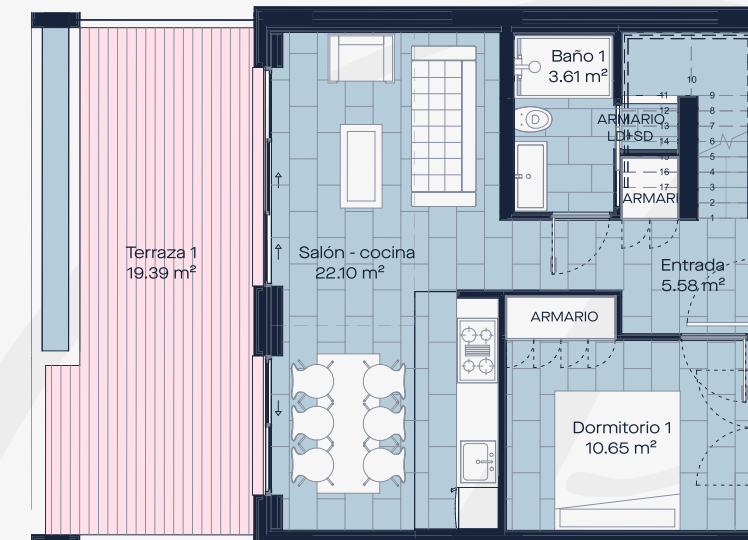
Planta Primera



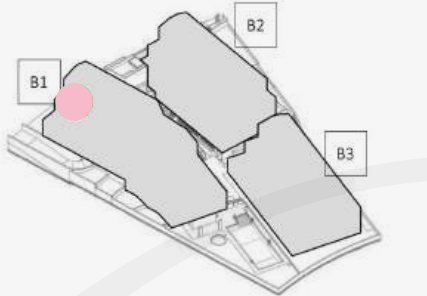
Sección Bloque 3



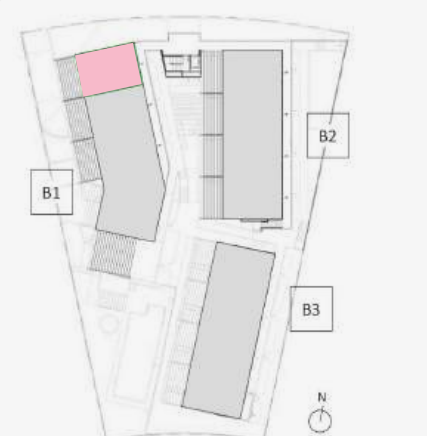
Planta Primera / FIRST FLOOR



Planta Segunda / SECOND FLOOR



Axonometría

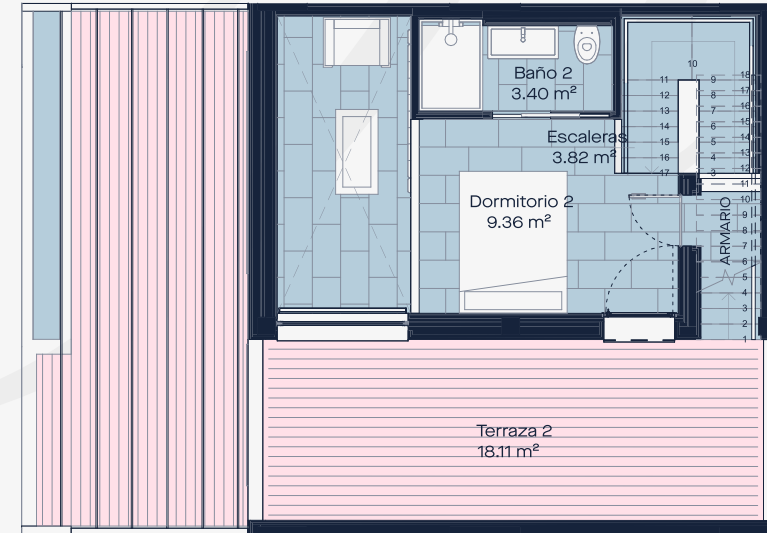


Planta Primera

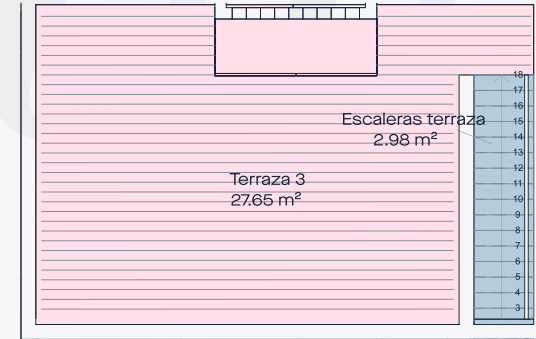


Sección Bloque 1

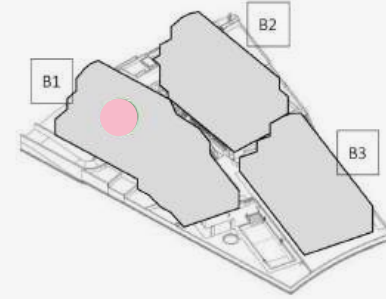
212



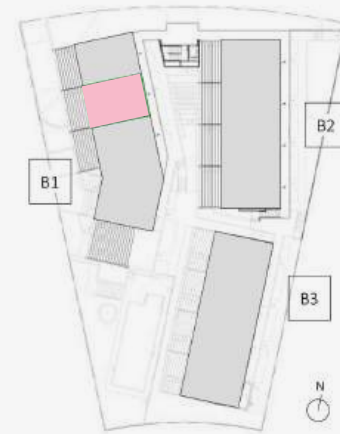
Planta Primera / FIRST FLOOR



Planta Segunda / SECOND FLOOR



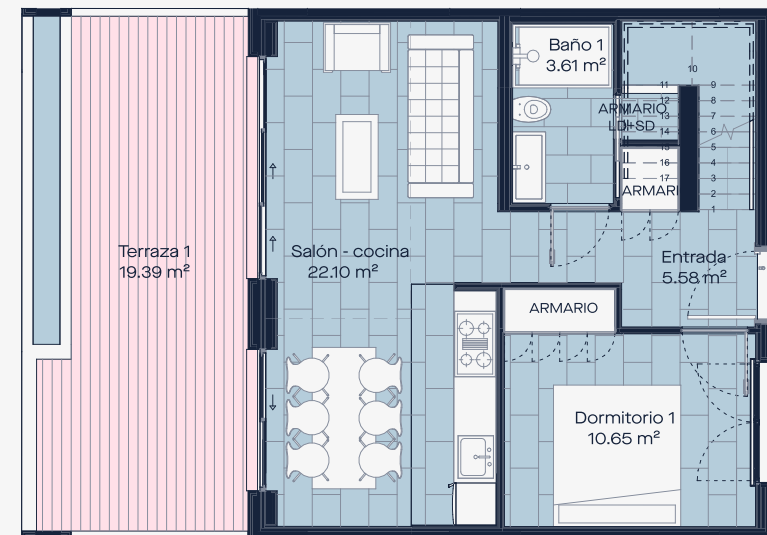
Axonometría



Planta Primera



Sección Bloque 1

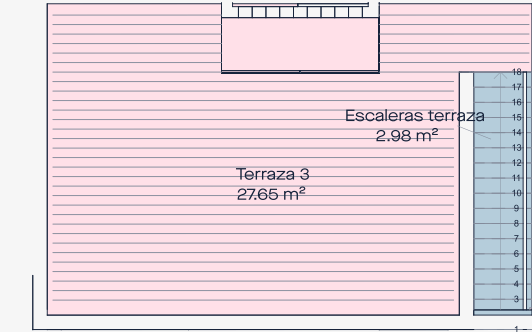


Planta Baja / GROUND FLOOR

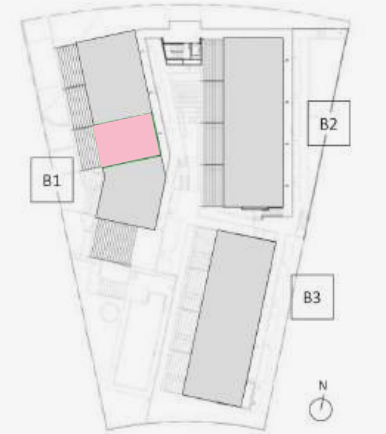
213



Planta Segunda / SECOND FLOOR



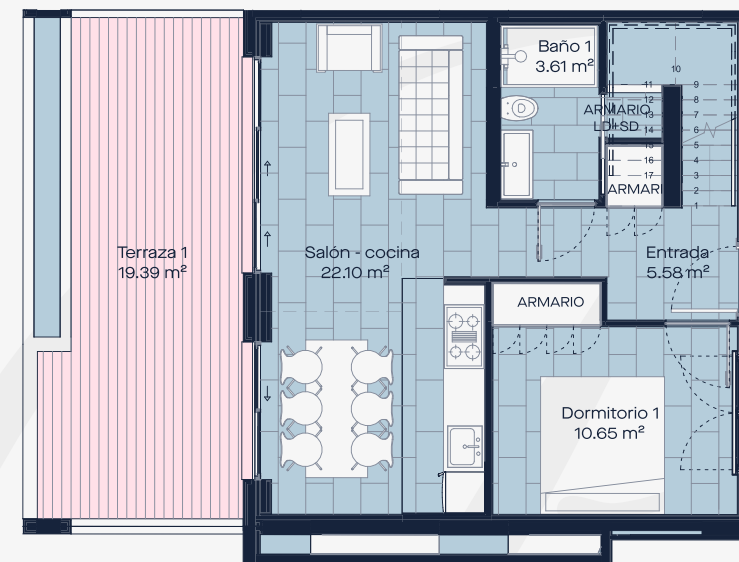
Axonometría



Planta Primera



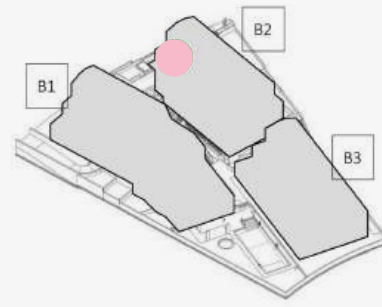
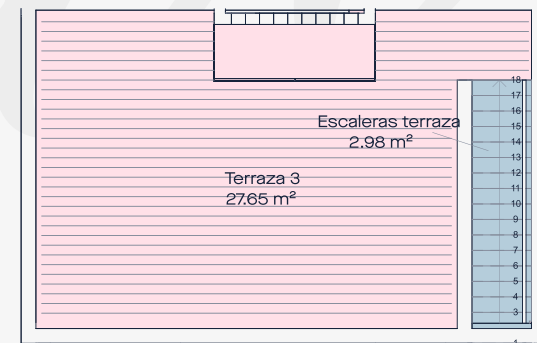
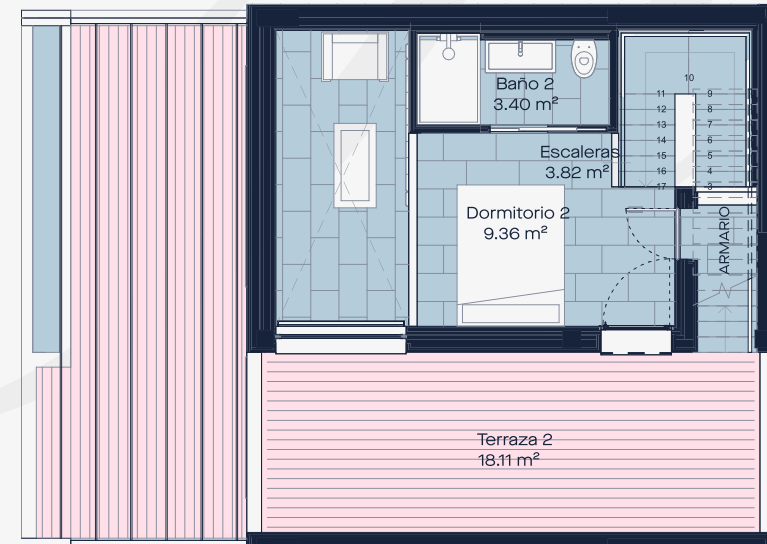
Sección Bloque 1



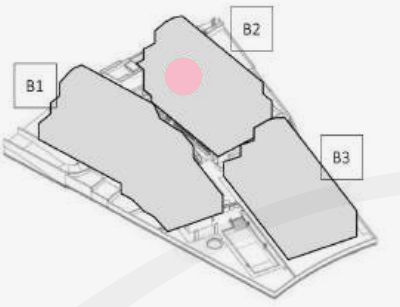
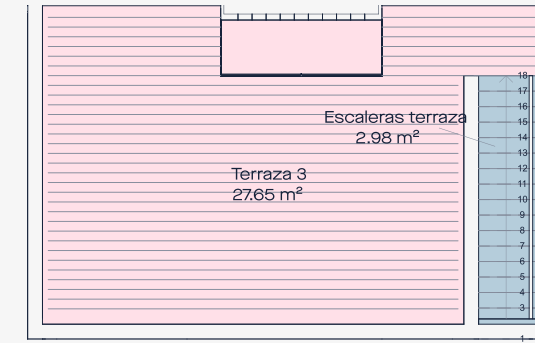
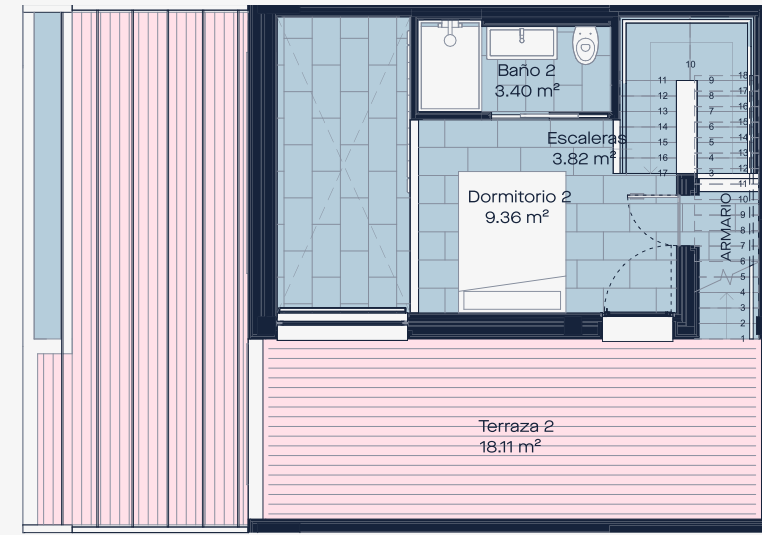
Planta Baja / GROUND FLOOR

221

222



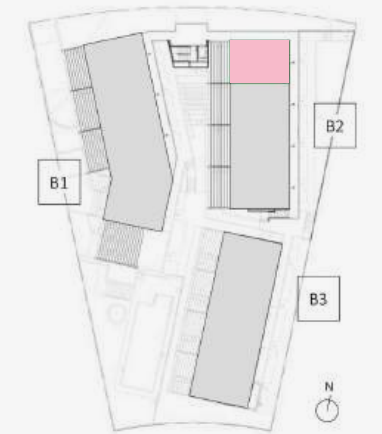
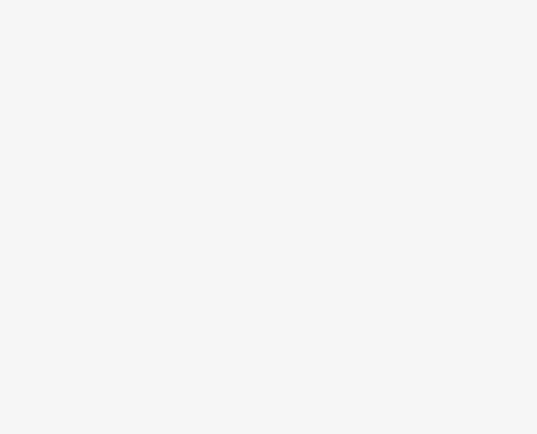
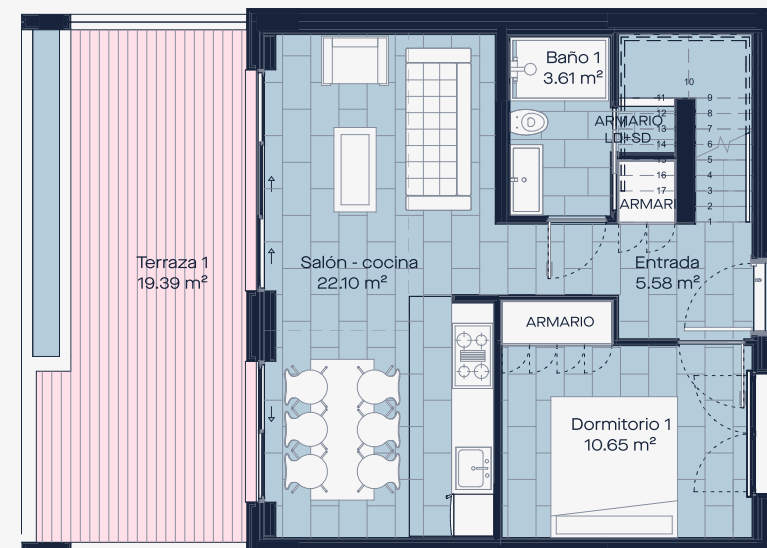
Axonometría



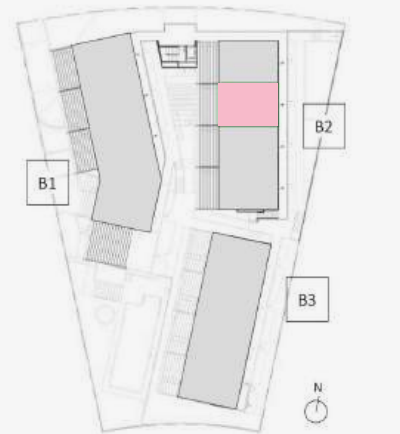
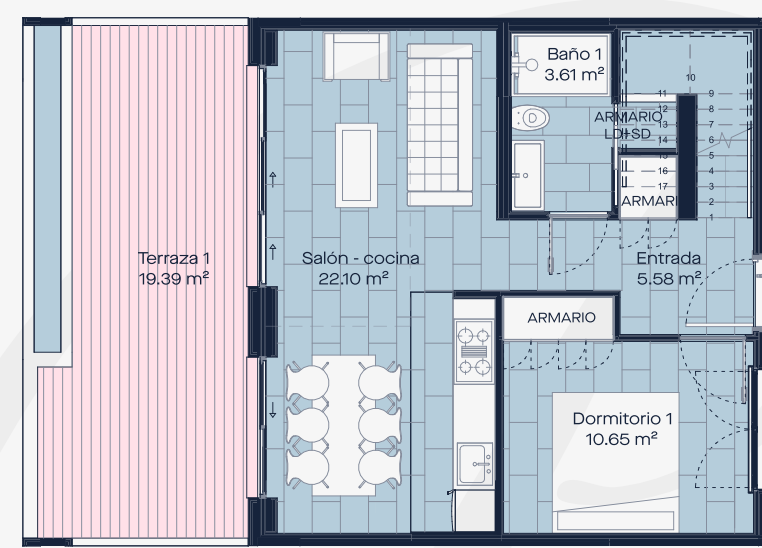
Axonometría

Planta Primera / FIRST FLOOR

Planta Primera / FIRST FLOOR



Planta Primera



Planta Primera

Planta Baja / GROUND FLOOR

Planta Baja / GROUND FLOOR



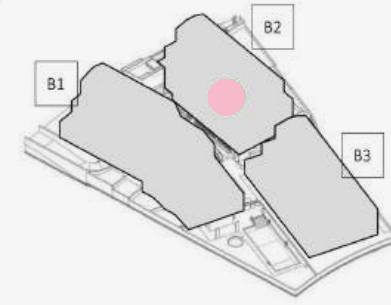
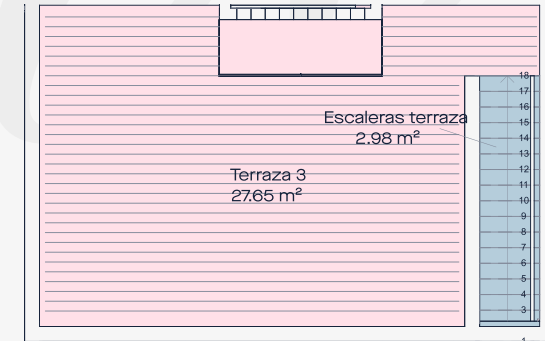
Sección Bloque 2



Sección Bloque 2

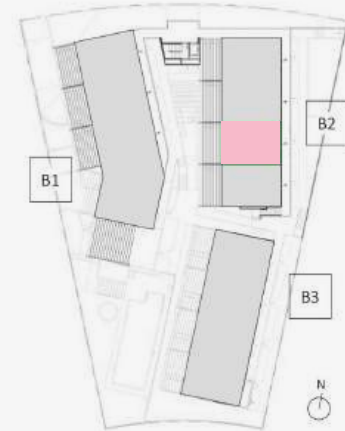
223

224



Axonometría

Planta Segunda / SECOND FLOOR

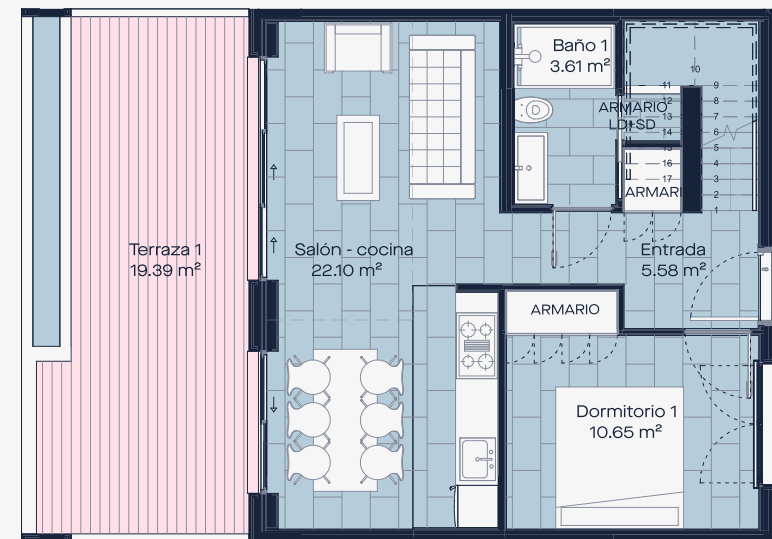


Planta Primera

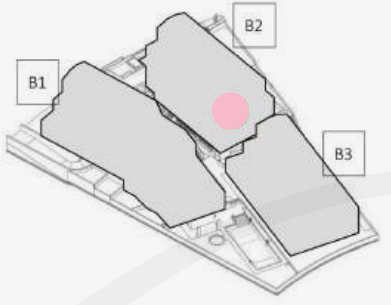
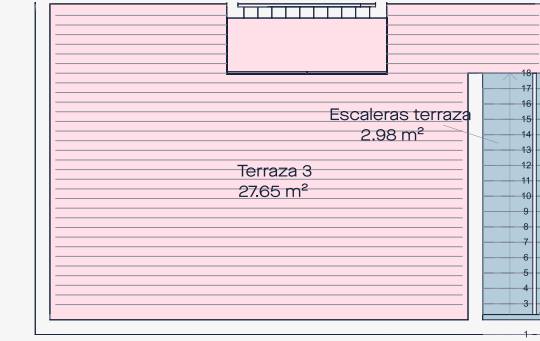
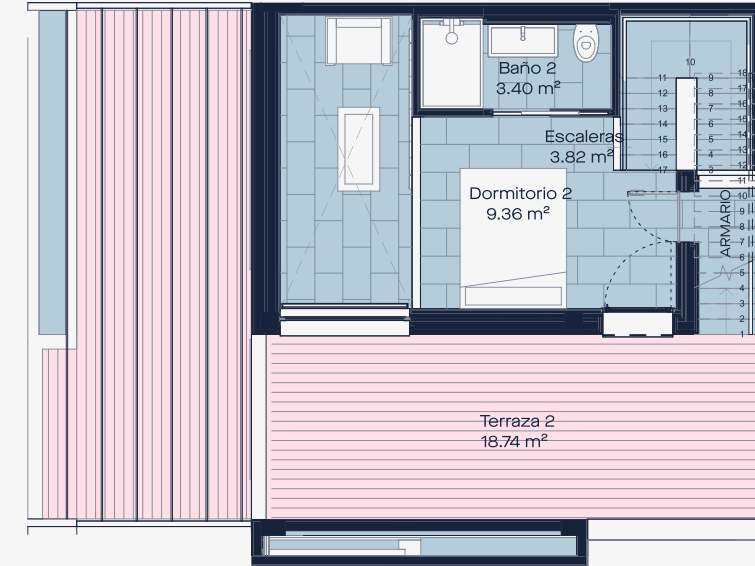


Sección Bloque 2

Planta Primera / FIRST FLOOR

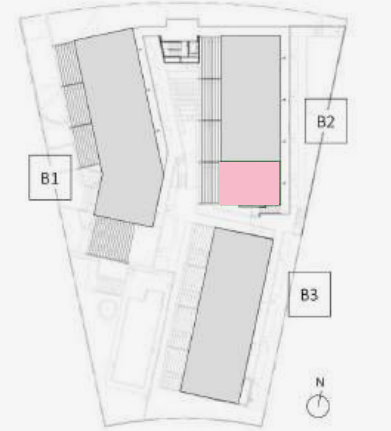


Planta Baja / GROUND FLOOR



Axonometría

Planta Segunda / SECOND FLOOR



Planta Primera



Sección Bloque 2

Planta Primera / FIRST FLOOR



Planta Baja / GROUND FLOOR



A PLACE TO RETURN TO