

  
*Sunhill*  
New Phase

in **FUENGIROLA**  
Los Pacos

---

Calle María de las Mercedes, 29640  
Fuengirola, Málaga





# Index

- ➔ **LOCATION AND SURROUNDINGS**
- ➔ **COMMUNAL AREAS**
- ➔ **ESPACIOS INTERIORES**
  - Lounge
  - Kitchen
  - Bedrooms
  - Main bathroom
  - Second bathroom
- ➔ **FLOOR PLANS**
- ➔ **BUILDING SPECIFICATIONS**
  - Lounge
  - Kitchen
  - Bedrooms
  - Main bathroom
  - Second bathroom
- ➔ **SUSTENTABILITY AND COMMITMENTS**
- ➔ **OUR EXPERIENCE**



  
Los Pacos, Fuengirola

Sunhill is located in a residential area with endless possibilities,  
a 2 Kilometres from the sea,  
5 minutes walk to the centre of Los Pacos, Fuengirola



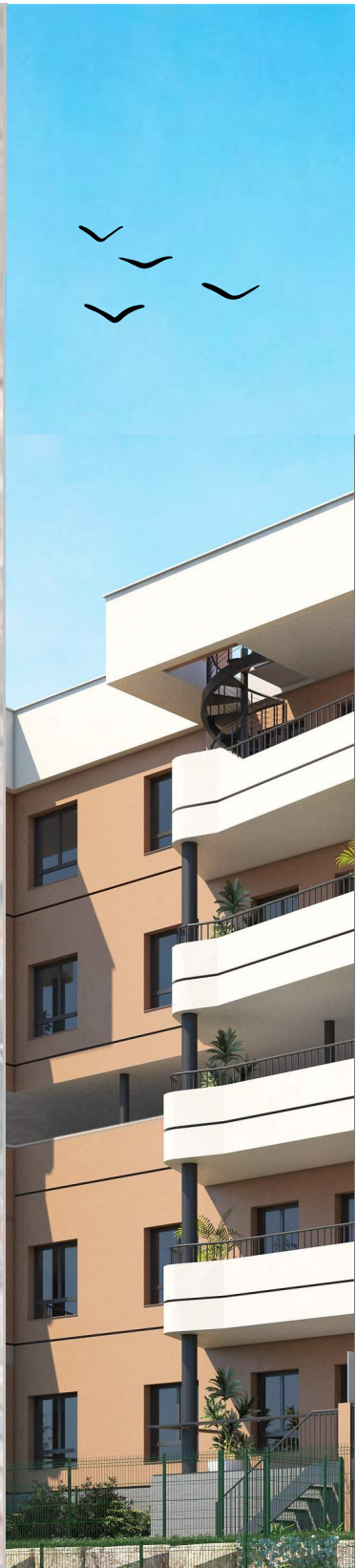
C. Maria de las Mercedes, 29640 Fuengirola, Málaga


 8 minutes of the sea (2 km)



This location offers a wide range of services and amenities, from parks and landscaped areas surrounding the Residence, to a varied selection of sports facilities, shops and educational establishments..

# Location and surroundings



 Sunhill (2ª fase) PORTAL 5

 EDUCACIÓN

 SUPERMARKETS

 SPORT

 PARKS, NATURE

 Bus stop line nº4



● SAUNA

● GYM

● LAUNDRY

● GARAGE

● POOL



ALL 15 HOMES INCLUDE A TERRACE  
3 PENTHOUSES  
OPEN AND BRIDE



OPEN PLAN KITCHENS WITH HIGH QUALITY FINISHES, IN THE L SHAPE WHO GIVES A GREAT AMPLITUDE TO THE SPACE

Espacios interiores

DORMITORIO PRINCIPAL



Sunhill

ALL HOMES HAVE 2 BEDROOMS

INSIDE SPACES

MAIN BATHROOM

HIGH QUALITY  
FINISHES

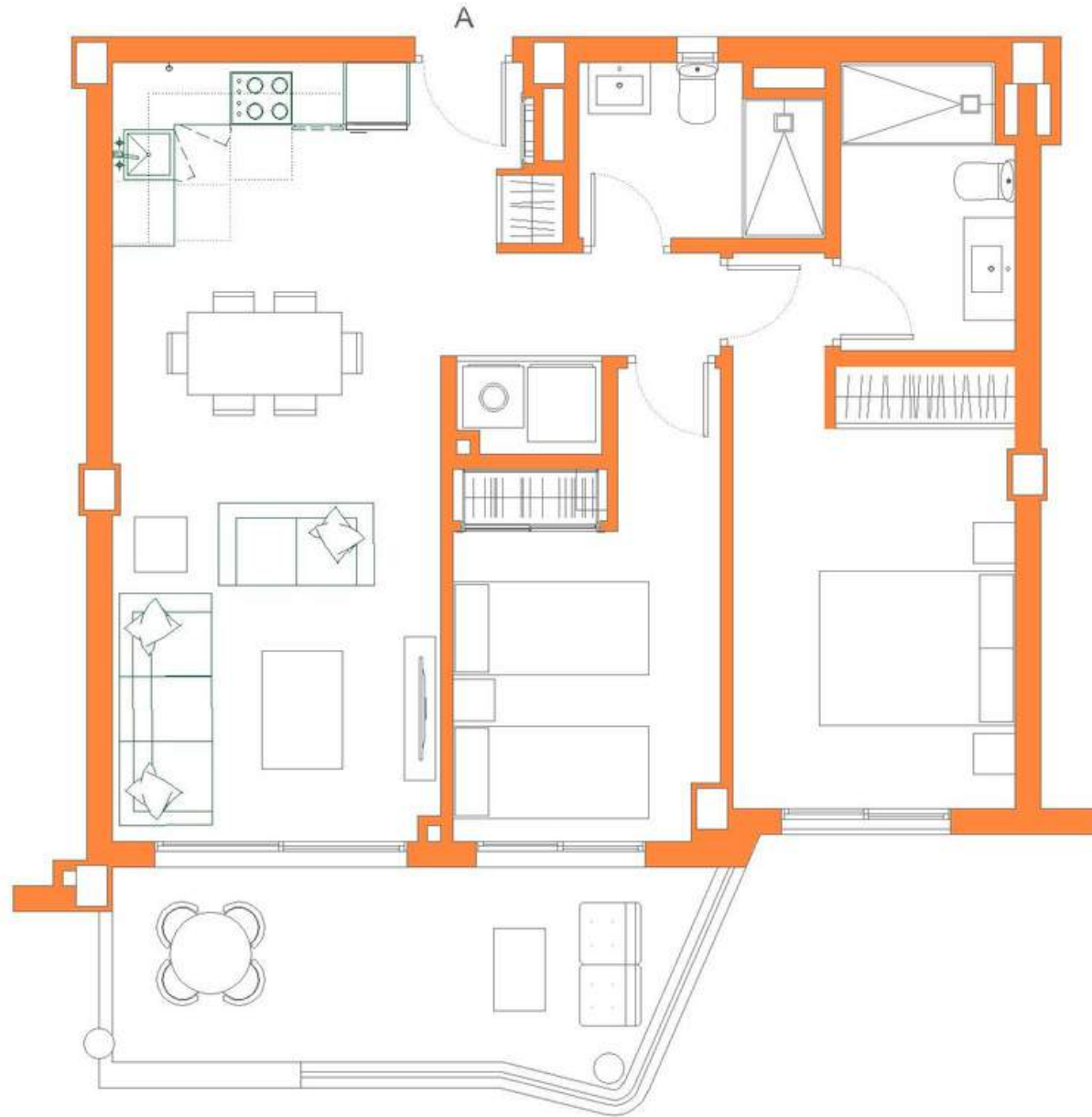


INSIDE SPACES

SECOND BATHROOM

TALL THE HOMES  
HAVE 2 BATHROOMS





## APARTMENT TYPE A

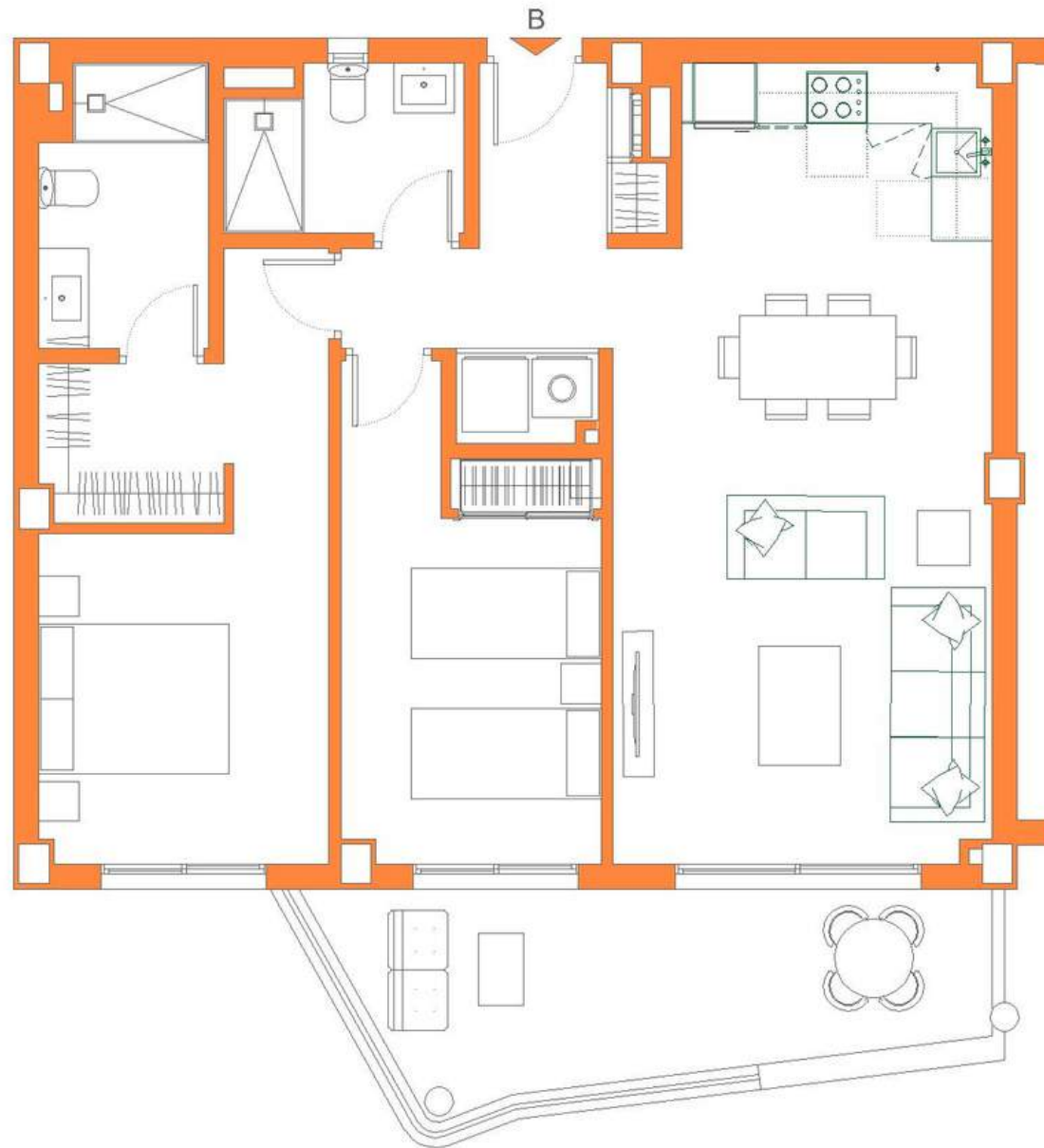
### BUILD AREAS

HOME TYPE A 70,89 m<sup>2</sup>

TERRACE 11,80m<sup>2</sup>

2 BEDROOMS  
2 BATHROOMS  
OPEN PLAN KITCHEN

SPACE FOR WASHING  
MACHINE  
PARKING  
USE OF COMMUNAL AREAS



### APARTAMENT TYPE B

#### BUILD AREAS

HOME TYPE B 81,96 m<sup>2</sup>

TERRACE 11,80m<sup>2</sup>

2 BEDROOMS

2 BATHROOMS

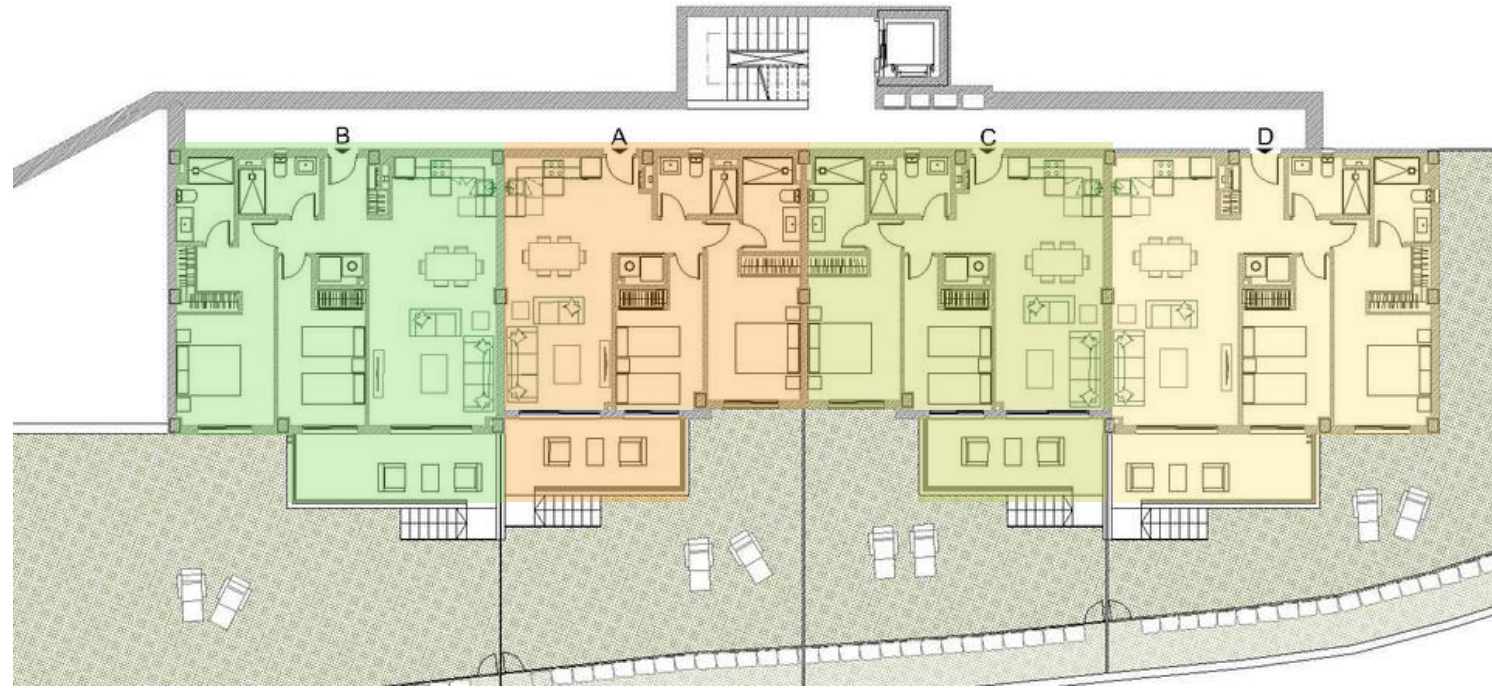
OPEN PLAN KITCHEN

SPACE FOR WASHING

MACHINE

PARKING

USE OF COMMUNAL AREAS



Garden Level



First Level

**HOMES TYPE B -A- C- D**

BUILD AREAS

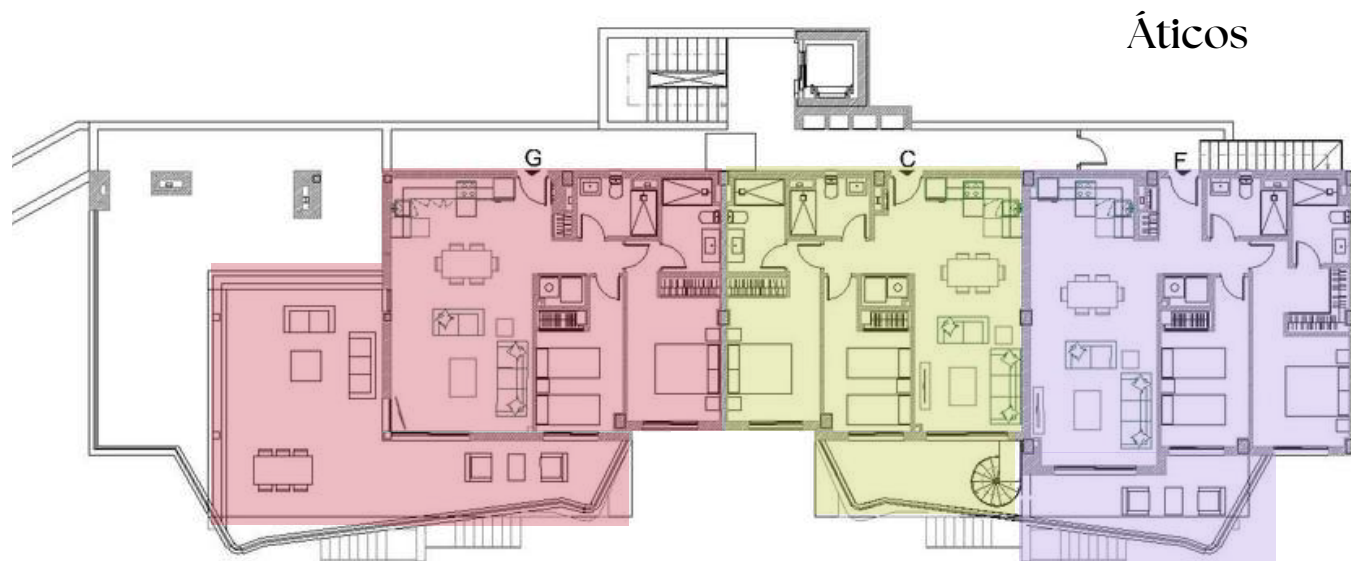
HOME TYPE B	96,13 m <sup>2</sup>
HOME TYPE A	83,57 m <sup>2</sup>
HOME TYPE C	83,57 m <sup>2</sup>
HOME TYPE D	96,13 m <sup>2</sup>

**HOMES TYPE E - A - C - F**

**BUILD AREAS**

HOME TYPE E	100,07 m <sup>2</sup>
HOME TYPE A	83,57 m <sup>2</sup>
HOME TYPE C	83,57 m <sup>2</sup>
HOME TYPE F	100,07 m <sup>2</sup>

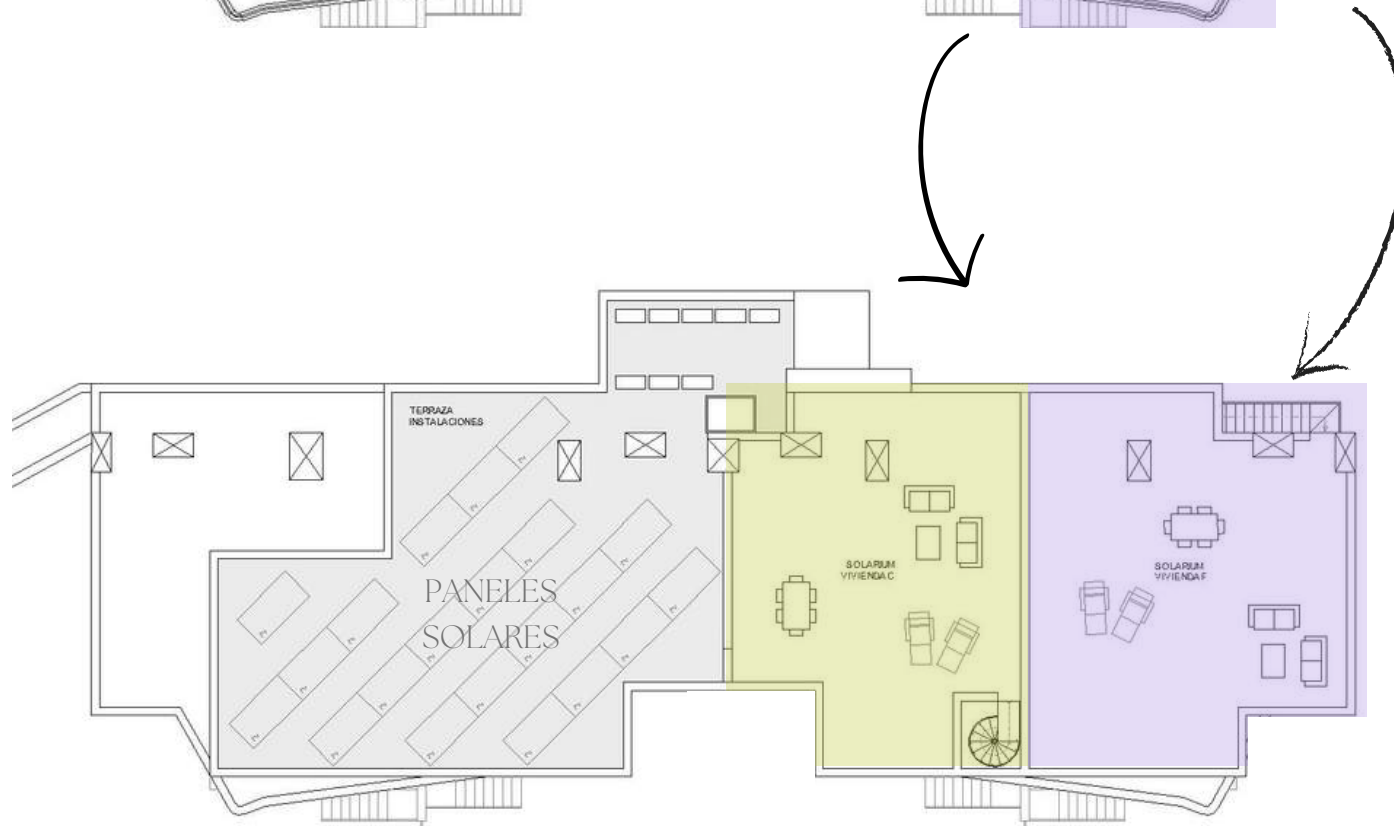


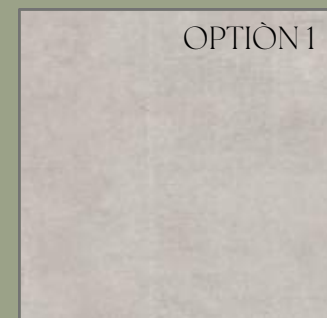


HOMES TYPE G - C - F

SUPERFICIES CONSTRUIDAS

HOME TYPE G	130,71 m <sup>2</sup>
HOME TYPE C	83,57 m <sup>2</sup>
HOME TYPO F	100,07 m <sup>2</sup>





### FLOORING OF HOMES

Porcelain tile flooring in choice of choosing colour cream or grey, with non-slip finish on terraces..



Sunhill



### SINK

Stainless steel sink, built-in under worktop.



### LECTRICAL APPLIANCES

Induction hob, oven, microwave, dishwasher and refrigerator included in first national brand.



### WORKTOP

Worktop and cladding between units in technological quartz type material.



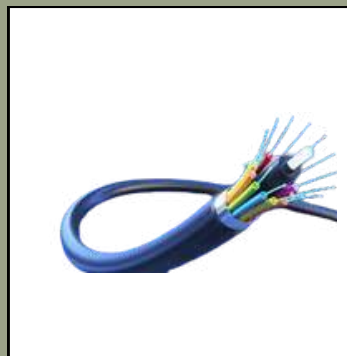
### FURNITURES

Wall and base units design with lacquered finish.



### AIR CONDITIONING

IDucted heating/cooling installation



### TELECOMUNICATION

Provision for any type of installation (cable, satellite or digital)



### MECHANISMS

Mechanisms in white colour design



**PORCELAIN  
CLADDING**

GLOSSY MARBLE  
EFFECT FINISH



**SANITARIES**

Premium brand  
white porcelain  
sanitary ware



**TAPS**

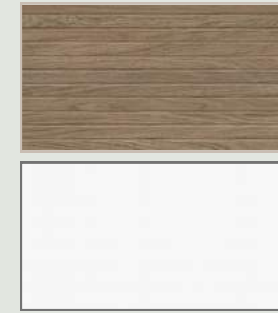
Premium single-lever  
mixer taps  
with water saving  
system



**FURNITURE**

Bathroom furniture  
with drawers and  
integrated white  
washbasin

Building Specifications - Second Bathroom



**PORCELAIN CLADDING**  
Wood-effect finish combined with white walls



**SANTARIES**  
Sanitarios de porcelana blanca primera marca



**TAPS**  
Premium single-lever mixer taps with water saving system

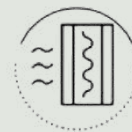


**FURNITURE**  
Bathroom furniture with 2 drawers and integrated sink



### **AEROTHERMAL SYSTEM (hot water production)**

System that heats the water with the heat of the air, using renewable energy that respects the environment and reduces CO2 emissions.



### **THERMAL INSULATION IN ENCLOSURES**

We optimise the energy losses of the house, both thermal and sound, by promoting the insulation of the façade envelopes and improving the waterproofing of the roof and floor.



### **CARPENTRY**

The exterior carpentry with thermal break, double glazing and dehydrated air chamber works together with the thermal insulation of the envelopes so that the temperature losses of the house are minimal and provide optimum sound insulation from the outside



### **PANELS PHOTOVOLTAIC**

Roof-mounted photovoltaic panels harness sunlight to create energy for use in communal areas



### **SINGLE-FLOW VENTILATION**

A system that brings fresh air from outside into the room and exhausts stale air from inside to outside on a continuous basis. This helps to maintain indoor air quality and regulate the temperature.



### **LED LIGHTING**

LED luminaires in communal areas that promote low consumption and high energy efficiency.

# Building Quality of Life since 1995

We are a real estate developer with more than 25 years of proven experience in the sector. We have developed numerous residential projects along the Costa del Sol, always achieving a high degree of customer satisfaction. The selection of land and plots in privileged locations, the high quality of the materials used and rigorous compliance with delivery deadlines are for us authentic signs of identity.



The Riad Benalmádena Pueblo



Playas del Carmen Fuengirola los Boliches



Residencial Monte Paraiso Fuengirola



# Sunhill

Information leaflet of a non-contractual nature. The information contained herein may be modified by the company, which reserves the right to make, during the course of the construction work or after its completion, any modifications required for technical, legal or commercial reasons, without this implying any significant alteration to the object and without reducing the quality of the materials. Development to be built in the near future. The Project is in the development phase. The infographics are merely informative, furniture not included; finishes, colours, sanitary ware and kitchen furniture are approximate. All information relating to the provisions of Royal Decree 515/89 of 21 April, on the protection of consumers, with regard to the information to be provided in the sale and rental of homes, is available to the client at the sales office and head office of CARPE INMOBILIARIA, Avda. de los Boliches, 40, Fuengirola 29640 (Málaga).