

FINCA
CORTESIN
RESIDENCES
The Art of Living

LA LOMA
DE CORTESIN





The project.

The Mediterranean at your feet.
A privileged location.

La Loma de Cortesin offers extraordinary panoramic views of the Mediterranean, just a few flight hours from Europe's major capital cities.

With spectacular mountains in the background, La Loma provides unique levels of service, intimacy, privacy and discretion in one of the most exclusive and elegant areas of the Costa del Sol.



The Residences.

Your own Eden.

Spread across 40,000 m², it boasts 86 private homes with more than 300 m² each combining a classically inspired elegant design with local materials and architectural characteristics. The design as well as the location are aimed at getting the most out of the spectacular surroundings and ensuring unbeatable views from all possible angles.



LA LOMA DE CORTESIN

Site plan.

1 Entrance

2 La Loma Club



La Loma Club.

Your private club.

A 1,700 m² oasis with the best recreational facilities, offering various luxury services for all residents at La Loma de Cortesin:
SPA, pool bar, gym, pools, meeting rooms...

Total Superficie
Total Area
1.817 m²

Zona Spa
Spa Area
580 m²

Piscina Interior
Interior Pool
491 m²

Zona Gimnasio
Gym Area
180 m²

Zona Social
Social Area
494 m²

Loggia
Loggia
72 m²





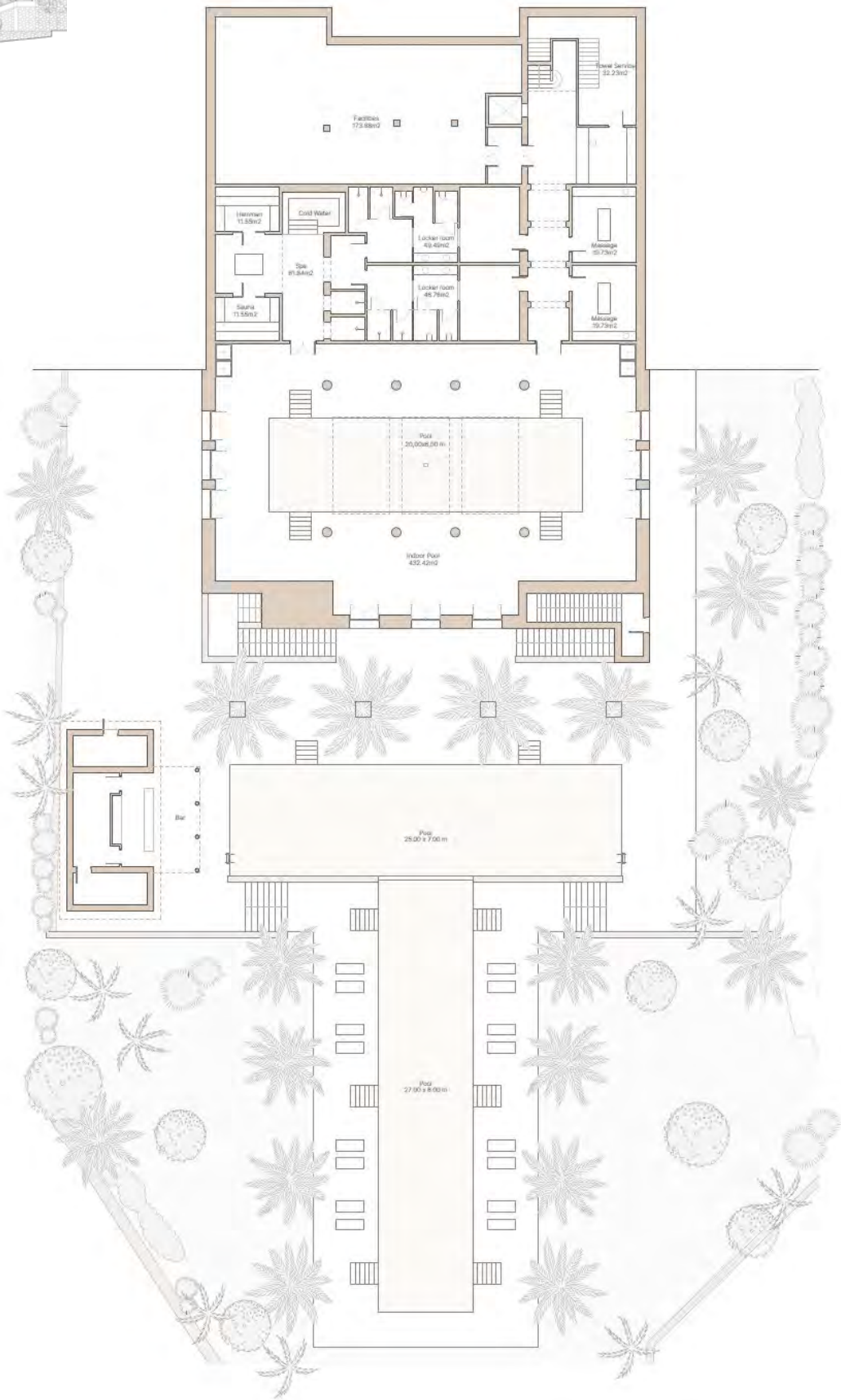




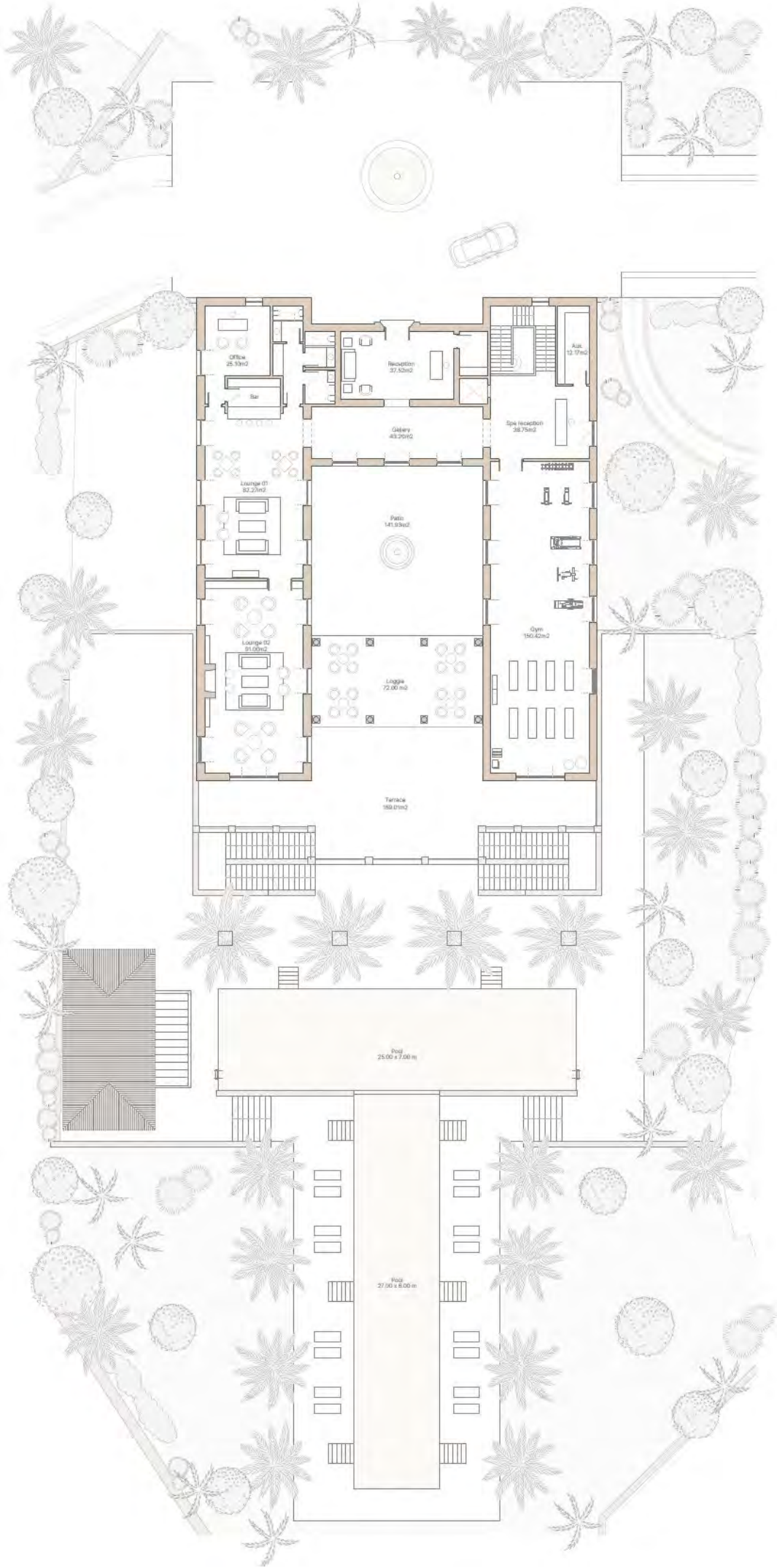
SPA

An exclusive space with a variety of services, such as a hammam or sauna, in addition to all the comforts and relaxation techniques conceived as part of this meticulous concept of disconnection and wellbeing.

La Loma Club



Planta Baja
Ground Floor



Planta Jardín
Garden Floor

Casa Pueblo

Arquitectos
Architects
Torras & Sierra

Total Superficie
Total Area
365 m²

Planta Baja
Ground Floor
125 m²

Piscina y Jardín
Pool & Garden
72 - 326 m²

Dormitorios
Bedrooms
3

Planta Primera
First Floor
119 m²

Terraza y Pérgola
Terrace & Pergola
77 - 128 m²

Baños
Bathrooms
3,5

Planta Sotano
Basement Floor
120 - 154 m²

Plazas de aparcamiento
Parking
2





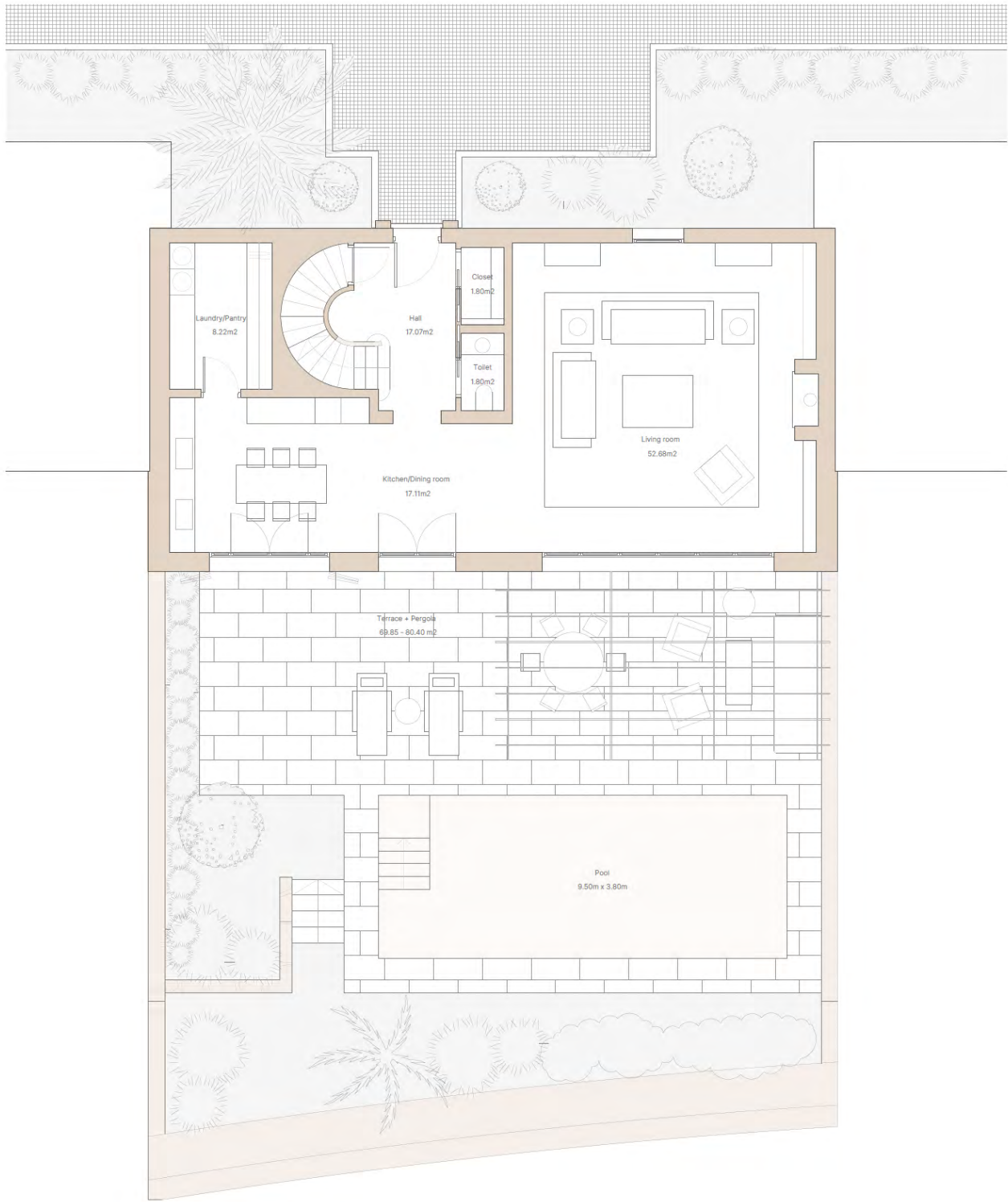
This authentic Andalusian village concept features 3 types of homes in the classical environment of flowery fountains and winding white streets.

With a joyful and warm spirit, there are also larger individual areas to live amongst nature on extensive plots.





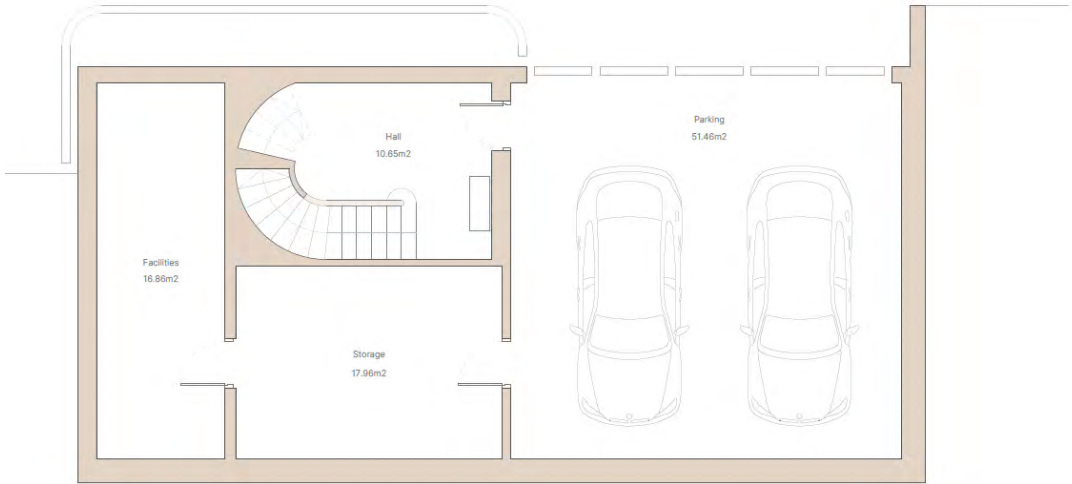
Casa Pueblo



Planta Baja
Ground Floor



Planta Primera
First Floor



Planta Sotano
Basement Floor

Cortijo 1

Arquitectos
Architects
Torras & Sierra

Total Superficie
Total Area
361 m²

Planta Baja
Ground Floor
206 m²

Planta Primera
First Floor
74 m²

Planta Sotano
Basement Floor
80 m²

Piscina y Jardín
Pool & Garden
466 - 931 m²

Terraza
Terrace
133 m²

Dormitorios
Bedrooms
3

Baños
Bathrooms
3,5

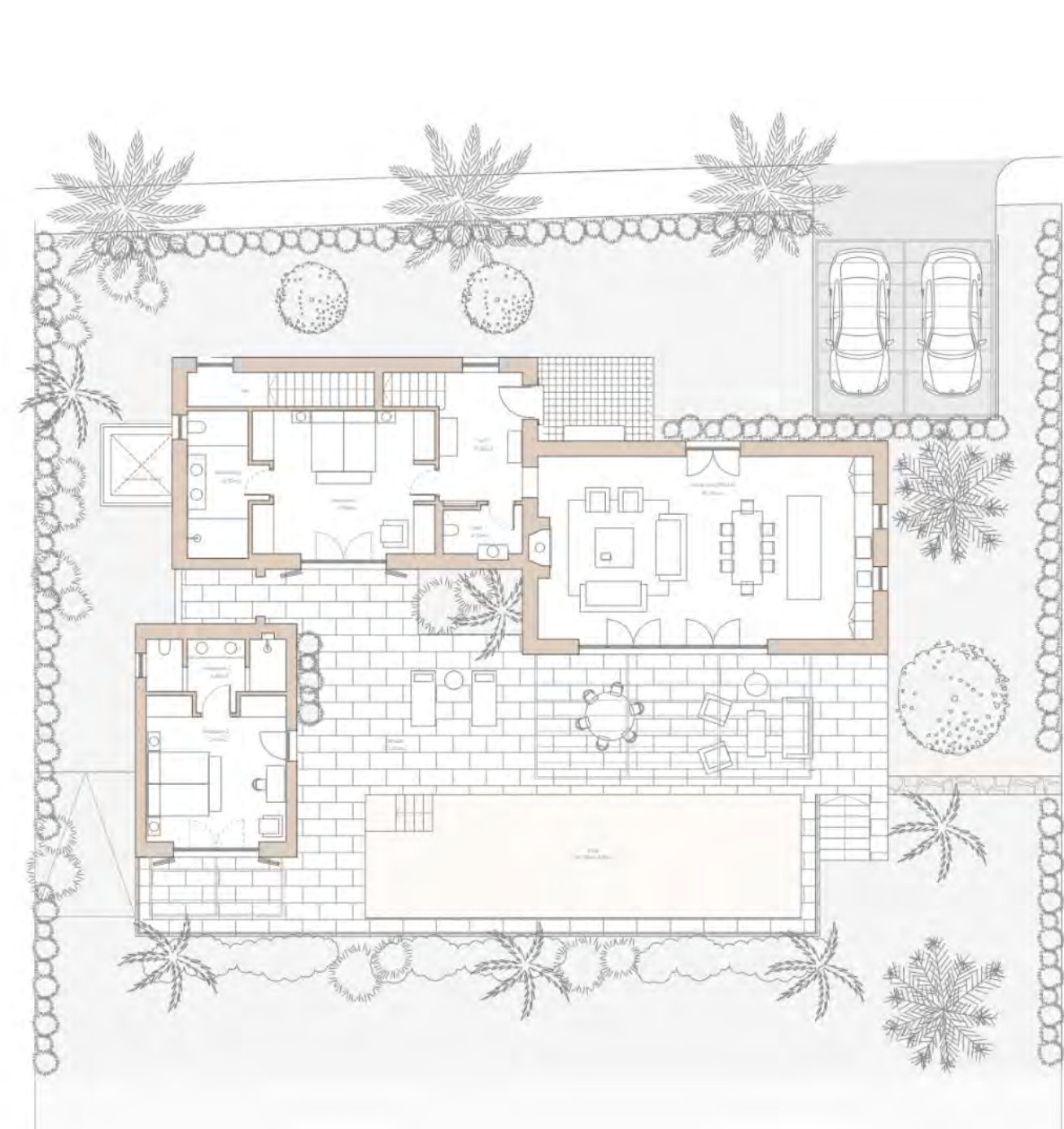
Plazas de aparcamiento
Parking
2



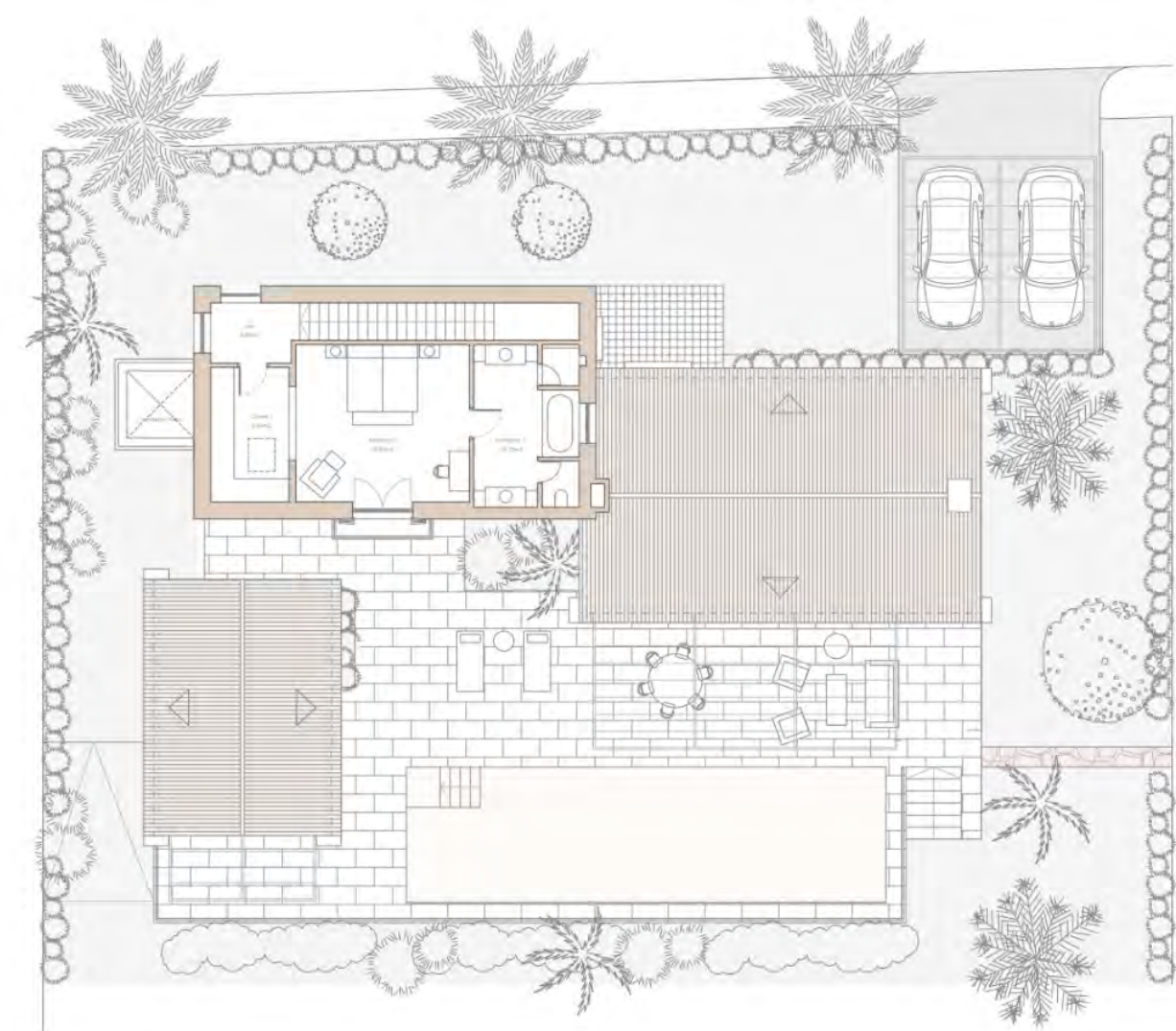




Cortijo 1



Planta Baja
Ground Floor



Planta Primera
First Floor



Planta Sotano
Basement Floor

Cortijo 2

Arquitectos
Architects
Torras & Sierra

Total Superficie
Total Area
342 m²

Planta Baja
Ground Floor
206 m²

Planta Primera
First Floor
57 m²

Planta Sotano
Basement Floor
78 m²

Piscina y Jardín
Pool & Garden
548 - 1.036 m²

Terraza
Terrace
116 m²

Dormitorios
Bedrooms
3

Baños
Bathrooms
3,5

Plazas de aparcamiento
Parking
2







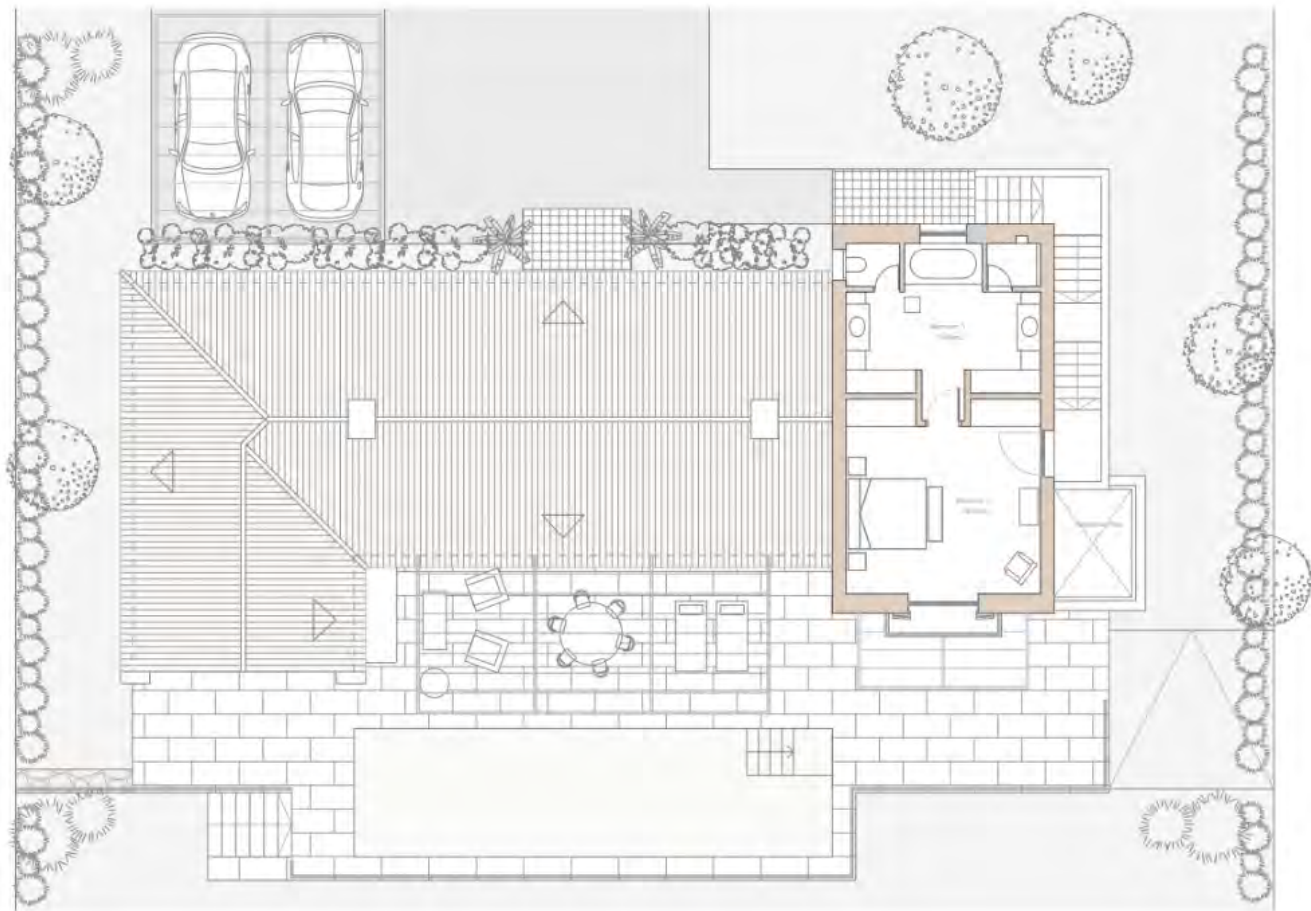




Cortijo 2



Planta Baja
Ground Floor



Planta Primera
First Floor



Planta Sotano
Basement Floor

Building Specifications

FOUNDATION AND STRUCTURE

- A foundation comprised of spread footing and reinforced concrete walls.
- A structure with reinforced concrete slabs and suspended flooring under the basement and part of the ground floor.

FACADES

- A 1 foot perforated brickwork facade with thermal insulation, an air chamber and cladding with double-panel drywall profiling (15+15mm) insulated with mineral wool.

INTERIOR PARTITION WALLS

- Interior divisions created with drywall double-panel partition walls (15-15 mm), 70 mm dry wall profiling and mineral wool on the inside. Waterproof drywall will be used in wet areas.
- 13 mm drywall false ceilings.

ROOFS

- Sloped roofs, Arabic-style ceramic tile finishes.

INSULATION

- A high level of thermal and acoustic insulation is achieved with the construction systems used. Solid structural slabs. Mineral wool panels in the partition walls. Thermal insulation in walls and roofs in contact with the outside. Anti-impact sheet metal under the flooring.

PLUMBING, CLIMATE CONTROL AND HEATING

- Plumbing (distribution) circuit with cross-linked polyethylene (PEX)
- Air renewal inside the home through a mechanical system.
- Air conditioning and domestic hot water production through a DAIKIN or similar aerothermal heat pump for hot/cold climate control, supported by an aerothermal tank.
- Heating and cooling through radiant heated flooring.
- Cooling system with aerothermal air and heating ducts.

ELECTRICITY AND AUTOMATION

- Jung or similar mechanisms.
- Telephone and TV sockets in the living room, bedrooms and kitchen.
- Pre-wiring for RJ 45 IT sockets in the bedrooms and living room.
- Home automation system featuring flood detectors, lighting control, climate control.
- Basic lighting inside the home.
- A security and alarm system that can be connected to the switchboard. Features volumetric detectors inside the home and curtain motion detectors along the ground floor.

CARPENTRY

- Solid oak-panelled room doors.
- Dressing rooms and built-in wardrobes with floor-to-ceiling oak leaves varnished and/or lacquered with interior lining.
- Exterior wood carpentry with low-E double glazing.

FLOORING, CLADDING AND PAINTING

- Natural stone flooring in all indoor and outdoor areas.
- Bathrooms painted and cladded in natural stone and ceramic with countertops in the same material.
- Porch and outdoor flooring in natural stone.
- Interior washable smooth plastic paint.

SANITARY FITTINGS AND TAPS

- Duravit or similar suspended sanitary fittings.
- CRISTINA or similar chrome-plated taps.
- Kaldewei or similar bathtub.
- A bush-hammered marble shower tray with glass screens.

KITCHEN

- A furnished kitchen with high and low cabinets.
- A Dekton or natural stone countertop.
- A multi-purpose oven, a glass-ceramic hob, extraction hood, refrigeration, freezer, dishwasher, built-in microwave (Siemens brand or similar).
- The washing area includes a Siemens brand or similar washer and dryer.

SWIMMING POOL

- Pool cladded in 10x10 cm glass ceramic tiles or natural stone and equipped with a saline chlorination treatment system and lighting.

GARAGE

- Indoor and outdoor parking, depending on the model. Roofs with or without a pergola depending on the type.

EXTERIORS

- Plots enclosed with Casares stone, fencing and vegetation.
- Gardens as per the Finca Cortesin landscaping project. Includes vegetation, trees and bushes, plants and an irrigation system.

Non-binding images are provided for guidance only and are subject to modifications for technical, legal or commercial reasons as determined by the site management or competent authorities. The infographics for the facades, common elements and other spaces are provided for guidance only and may be subject to changes or modifications in the technical projects. The furnishings shown in the interior infographics are not included; all home fittings will be as indicated in the corresponding building specifications.

The developer and the technical department reserve the right to make any changes during the construction process as a result of technical, legal or commercial requirements as long as there is no impact on the overall result.

Just a step away from anywhere.
Far away from the world.

